

## CD45.1 antibody [A20] (APC-Cy7)

Cat. No. GTX01463-15

Host	Mouse
Clonality	Monoclonal
Isotype	IgG2a
Application	FACS
Reactivity	Mouse

Reference ( 4 )  
Package  
100 µg

## PRODUCT

## Summary

The A20 antibody reacts with mouse CD45.1, also known as Ly5.1, which is a strain-specific allelic form of the CD45 Leukocyte Common Antigen (LCA). Functionally, CD45 is a protein tyrosine phosphatase whose broad cell distribution supports a critical role in many leukocyte functions, including regulation of signal transduction and cell activation associated with the T cell and B cell receptors. The A20 antibody is typically used as a leukocyte marker in Ly5.1 mouse strains: SJL/J, DA, STS/A and RIII. The antibody has been demonstrated to specific for CD45.1 and is not cross-reactive with CD45.2 bearing cells.

## APPLICATION

## Application Note

\*Optimal dilutions/concentrations should be determined by the researcher.

Suggested dilution	Recommended dilution
FACS	Assay dependent

Not tested in other applications.

## PROPERTIES

Form	Liquid
Buffer	10mM NaH <sub>2</sub> PO <sub>4</sub> , 150mM NaCl, 0.1% Gelatin
Preservative	0.09% Sodium azide
Storage	Store as concentrated solution. Centrifuge briefly prior to opening vial. Store at 4°C. DO NOT FREEZE. Protect from light.
Concentration	0.2 mg/ml (Please refer to the vial label for the specific concentration.)
Purification	Purified by affinity chromatography From tissue culture supernatant
Conjugation	Allophycocyanin-Cyanine7 (APC-Cy7)

## Note

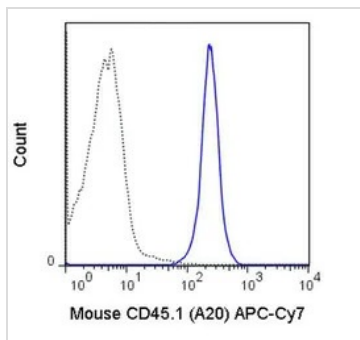
For laboratory research use only. Not for any clinical, therapeutic, or diagnostic use in humans or animals. Not for animal or human consumption.

Purchasers shall not, and agree not to enable third parties to, analyze, copy, reverse engineer or otherwise attempt to determine the structure or sequence of the product.



For full product information, images and publications, please visit our [website](#).

## DATA IMAGES



### GTX01463-15 FACS Image

FACS analysis of mouse SJL splenocytes using GTX01463-15 CD45.1 antibody [A20] (APC-Cy7).

Solid line : primary antibody

Dashed line : isotype control

antibody amount : 1  $\mu$ g (5  $\mu$ l)



For full product information, images and publications, please visit our [website](#).