

## CD45.1 antibody [A20] (APC-Cy7)

Cat. No. GTX01463-15

<b>Host</b>	Mouse
<b>Clonality</b>	Monoclonal
<b>Isotype</b>	IgG2a
<b>Applications</b>	FCM
<b>Reactivity</b>	Mouse

References ( 4 )

Package

100 µg

## PRODUCT

## Summary

The A20 antibody reacts with mouse CD45.1, also known as Ly5.1, which is a strain-specific allelic form of the CD45 Leukocyte Common Antigen (LCA). Functionally, CD45 is a protein tyrosine phosphatase whose broad cell distribution supports a critical role in many leukocyte functions, including regulation of signal transduction and cell activation associated with the T cell and B cell receptors. The A20 antibody is typically used as a leukocyte marker in Ly5.1 mouse strains: SJL/J, DA, STS/A and RIII. The antibody has been demonstrated to be specific for CD45.1 and is not cross-reactive with CD45.2 bearing cells.

## Applications

## Application Note

\*Optimal dilutions/concentrations should be determined by the researcher.

## Suggested dilution

## Recommended dilution

FCM

Assay dependent

Not tested in other applications.

## Properties

**Form** Liquid

**Buffer** 10mM NaH<sub>2</sub>PO<sub>4</sub>, 150mM NaCl, 0.1% Gelatin

**Preservative** 0.09% Sodium azide

**Storage** Store as concentrated solution. Centrifuge briefly prior to opening vial. Store at 4°C. DO NOT FREEZE. Protect from light.

**Concentration** 0.2 mg/ml (Please refer to the vial label for the specific concentration.)

**Purification** Purified by affinity chromatography  
From tissue culture supernatant

**Conjugation** Allophycocyanin-Cyanine7 (APC-Cy7) [Wavelength](#)

## Note

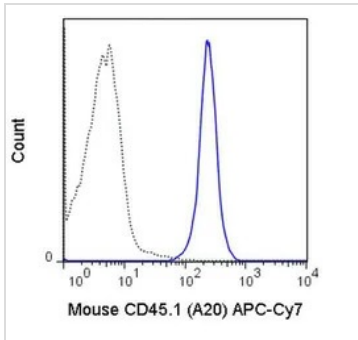
For laboratory research use only. Not for any clinical, therapeutic, or diagnostic use in humans or animals. Not for animal or human consumption.

Purchasers shall not, and agree not to enable third parties to, analyze, copy, reverse engineer or otherwise attempt to determine the structure or sequence of the product.



For full product information, images and publications, please visit our [website](#).

## DATA IMAGES

**GTX01463-15 FCM Image**

FACS analysis of mouse SJL splenocytes using GTX01463-15 CD45.1 antibody [A20] (APC-Cy7).

Solid line : primary antibody

Dashed line : isotype control

antibody amount : 1  $\mu$ g (5  $\mu$ l)



For full product information, images and publications, please visit our [website](#).