

CD45RA antibody [HI100] (PE)

Cat. No. GTX01464-08

Host	Mouse
Clonality	Monoclonal
Isotype	IgG2b
Applications	FCM
Reactivity	Human, Chimpanzee

References (6)
 Package
 100 test

PRODUCT

Summary

The HI100 antibody reacts with the human CD45 isoform known as CD45RA, a protein tyrosine phosphatase of ≥ 220 kDa. CD45 is one of the most abundant hematopoietic markers, and is expressed on all leukocytes (the Leukocyte Common Antigen, LCA). Various isoforms are generated and expressed in cell-specific patterns. With their broad cell distribution, CD45 isoforms are critical for many leukocyte functions, regulating signal transduction and cell activation associated with the T cell receptor, B cell receptor, and IL-2 receptor. Other forms of CD45, with restricted cellular expression, include CD45R (B220), CD45RB, CD45RO and others. The HI100 antibody is widely used as a marker for human CD45RA expression on naive and activated T cells, B cells, and monocytes.

Applications

Application Note

*Optimal dilutions/concentrations should be determined by the researcher.

Suggested dilution

Recommended dilution

FCM	0.06 μg (5 μl) for 10^5 - 10^8 cells in 100 μl sample per test
-----	--

Not tested in other applications.

Properties

Form	Liquid
-------------	--------

Buffer	10mM NaH_2PO_4 , 150mM NaCl, 0.1% Gelatin
---------------	---

Preservative	0.09% Sodium azide
---------------------	--------------------

Storage	Store as concentrated solution. Centrifuge briefly prior to opening vial. Store at 4°C. DO NOT FREEZE. Protect from light.
----------------	--

Concentration	0.012 mg/ml (Please refer to the vial label for the specific concentration.)
----------------------	--

Purification	Purified by affinity chromatography From tissue culture supernatant
---------------------	--

Conjugation	Phycoerythrin (PE) Wavelength
--------------------	---

Note

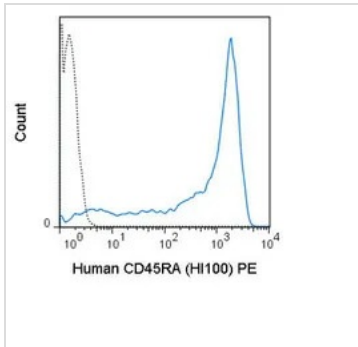
For laboratory research use only. Not for any clinical, therapeutic, or diagnostic use in humans or animals. Not for animal or human consumption.

Purchasers shall not, and agree not to enable third parties to, analyze, copy, reverse engineer or otherwise attempt to determine the structure or sequence of the product.



For full product information, images and publications, please visit our [website](#).

DATA IMAGES

**GTX01464-08 FCM Image**

FACS analysis of human peripheral blood lymphocytes using GTX01464-08 CD45RA antibody [HI100] (PE).

Solid line : primary antibody

Dashed line : isotype control

antibody amount : 0.06 μ g (5 μ l)



For full product information, images and publications, please visit our [website](#).