

CD8 alpha antibody [OKT8] (APC)

Cat. No. GTX01466-07

Host	Mouse
Clonality	Monoclonal
Isotype	IgG2a
Applications	FCM
Reactivity	Human

References (7)
 Package
 100 test

PRODUCT

Summary

The OKT8 antibody is specific for the 32-34 kDa alpha chain of human CD8, known as CD8a or CD8 alpha. CD8a can form a homodimer (CD8 alpha-alpha), but is more commonly expressed as a heterodimer with a second chain known as CD8b or CD8 beta. CD8 acts as a co-receptor for antigen recognition and subsequent T cell activation that is initiated upon binding of the T cell receptor (TCR) to antigen-bearing MHC Class I molecules. The cytoplasmic domains of CD8 provide binding sites for the tyrosine kinase lck, facilitating intracellular signaling events that lead to T cell activation, development, and cytotoxic effector functions. CD8+ cytotoxic T cells (CTLs) play an important role in inducing cell death of tumor cells, as well as cells infected by virus, bacteria or parasites. The OKT8 antibody is widely used as a phenotypic marker for CD8 on cytotoxic T cells, thymocytes, as well as on certain cell types that do not also express the TCR, including some NK cells and lymphoid dendritic cells. If used together with alternative antibodies Anti-Human CD8a clone RPA-T8 or Anti-Human CD8a clone Hit8a, the OKT8 antibody will not block binding of RPA-T8 or Hit8a.

Applications

Application Note

*Optimal dilutions/concentrations should be determined by the researcher.

Suggested dilution

Recommended dilution

FCM	0.06 µg (5 µl) for 10 ⁵ -10 ⁸ cells in 100 µl sample per test
-----	---

Not tested in other applications.

Properties

Form	Liquid
-------------	--------

Buffer	10mM NaH ₂ PO ₄ , 150mM NaCl, 0.1% Gelatin
---------------	--

Preservative	0.09% Sodium azide
---------------------	--------------------

Storage	Store as concentrated solution. Centrifuge briefly prior to opening vial. Store at 4°C. DO NOT FREEZE. Protect from light.
----------------	--

Concentration	0.012 mg/ml (Please refer to the vial label for the specific concentration.)
----------------------	--

Purification	Purified by affinity chromatography From tissue culture supernatant
---------------------	--

Conjugation	Allophycocyanin (APC) Wavelength
--------------------	--



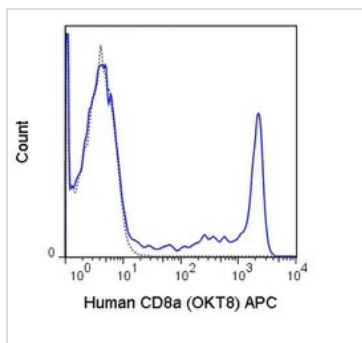
For full product information, images and publications, please visit our [website](#).

For laboratory research use only. Not for any clinical, therapeutic, or diagnostic use in humans or animals. Not for animal or human consumption.

Note

Purchasers shall not, and agree not to enable third parties to, analyze, copy, reverse engineer or otherwise attempt to determine the structure or sequence of the product.

DATA IMAGES

**GTX01466-07 FCM Image**

FACS analysis of human peripheral blood lymphocytes using GTX01466-07 CD8 alpha antibody [OKT8] (APC).

Solid line : primary antibody

Dashed line : isotype control

antibody amount : 0.06 μ g (5 μ l)



For full product information, images and publications, please visit our [website](#).