

## CD8 alpha antibody [RPA-T8] (Biotin)

Cat. No. GTX01467-02

|                     |   |
|---------------------|---|
| <b>Host</b>         | Mouse   |
| <b>Clonality</b>    | Monoclonal  |
| <b>Isotype</b>      | IgG1  |
| <b>Applications</b> | FCM   |
| <b>Reactivity</b>   | Human, Baboon, Chimpanzee, Cynomolgus monkey, Rhesus Monkey, Sooty Mangabey |

References ( 6 )

Package

100 µg

## PRODUCT

## Summary

The RPA-T8 antibody is specific for the 32-34 kDa alpha chain of human CD8, known as CD8a or CD8 alpha. CD8a can form a homodimer (CD8 alpha-alpha), but is more commonly expressed as a heterodimer with a second chain known as CD8b or CD8 beta. CD8 acts as a co-receptor for antigen recognition and subsequent T cell activation that is initiated upon binding of the T cell receptor (TCR) to antigen-bearing MHC Class I molecules. The cytoplasmic domains of CD8 provide binding sites for the tyrosine kinase lck, facilitating intracellular signaling events that lead to T cell activation, development, and cytotoxic effector functions. CD8+ cytotoxic T cells (CTLs) play an important role in inducing cell death of tumor cells, as well as cells infected by virus, bacteria or parasites. The RPA-T8 antibody is widely used as a phenotypic marker for CD8 on cytotoxic T cells, thymocytes, as well as on certain cell types that do not also express the TCR, including some NK cells and lymphoid dendritic cells. It is cross-reactive with CD8 in several non-human species, including Baboon, Chimpanzee, Cynomolgus and Rhesus. If used together with an alternative Anti-Human CD8a clone, Hit8a, the RPA-T8 antibody will not block binding of Hit8a to CD8a.

## Applications

## Application Note

\*Optimal dilutions/concentrations should be determined by the researcher.

## Suggested dilution

FCM

## Recommended dilution

Assay dependent

Not tested in other applications.

## Properties

|                      |  |
|----------------------|--|
| <b>Form</b>          | Liquid   |
| <b>Buffer</b>        | 10mM NaH <sub>2</sub> PO <sub>4</sub> , 150mM NaCl   |
| <b>Preservative</b>  | 0.09% Sodium azide   |
| <b>Storage</b>       | Store as concentrated solution. Centrifuge briefly prior to opening vial. Store at 4°C. DO NOT FREEZE. Protect from light. |
| <b>Concentration</b> | 0.5 mg/ml (Please refer to the vial label for the specific concentration.)   |
| <b>Purification</b>  | Purified by affinity chromatography<br>From tissue culture supernatant   |
| <b>Conjugation</b>   | Biotin   |



For full product information, images and publications, please visit our [website](#).

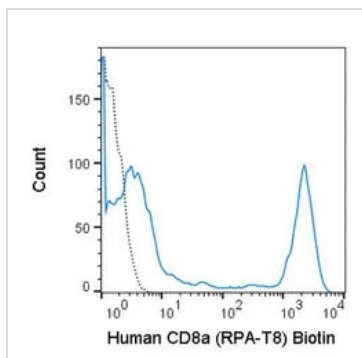
Date 2026 / 05 / 04 Page 1 of 2

For laboratory research use only. Not for any clinical, therapeutic, or diagnostic use in humans or animals. Not for animal or human consumption.

**Note**

Purchasers shall not, and agree not to enable third parties to, analyze, copy, reverse engineer or otherwise attempt to determine the structure or sequence of the product.

## DATA IMAGES

**GTX01467-02 FCM Image**

FACS analysis of human peripheral blood lymphocytes using GTX01467-02 CD8 alpha antibody [RPA-T8] (Biotin).

Solid line : primary antibody

Dashed line : isotype control

antibody amount : 0.125  $\mu$ g (5  $\mu$ l)



For full product information, images and publications, please visit our [website](#).