

IL2 Receptor alpha antibody [BC96] (APC)

Cat. No. GTX01471-07

Host	Mouse
Clonality	Monoclonal
Isotype	IgG1
Applications	FCM
Reactivity	Human, Baboon, Chimpanzee, Cynomolgus monkey, Rhesus Monkey

References (6)
 Package
 100 test

PRODUCT

Summary

The BC96 antibody is specific for human CD25, a 55 kDa surface protein also known as the Interleukin-2 Receptor alpha chain, or IL-2R alpha. CD25 may bind IL-2 by itself, although with low affinity and without induction of cell signaling. CD25 is also expressed within a high-affinity complex, along with the IL-2R beta chain (CD122) and the common gamma chain (CD132), to form a signaling receptor complex. Signaling via CD25 may modulate Th17 and Treg cell differentiation, and has been shown to play a role in the function of dendritic cells. The BC96 antibody may be used as a marker for expression of CD25 during T and B cell development, on activated mature T and B cells, and for its expression at high levels on natural T regulatory cells (nTreg cells) in the thymus or periphery, and on "induced" peripheral Tregs. This antibody is cross-reactive with CD25 in several non-human species, including Baboon, Chimpanzee, Cynomolgus and Rhesus.

Applications

Application Note

*Optimal dilutions/concentrations should be determined by the researcher.

Suggested dilution	Recommended dilution
FCM	0.125 µg (5 µl) for 10 ⁵ -10 ⁸ cells in 100 µl sample per test

Not tested in other applications.

Properties

Form	Liquid
Buffer	10mM NaH ₂ PO ₄ , 150mM NaCl, 0.1% Gelatin
Preservative	0.09% Sodium azide
Storage	Store as concentrated solution. Centrifuge briefly prior to opening vial. Store at 4°C. DO NOT FREEZE. Protect from light.
Concentration	0.025 mg/ml (Please refer to the vial label for the specific concentration.)
Purification	Purified by affinity chromatography From tissue culture supernatant
Conjugation	Allophycocyanin (APC) Wavelength

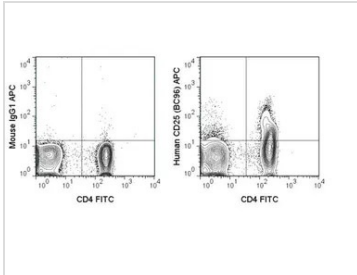


For full product information, images and publications, please visit our [website](#).

For laboratory research use only. Not for any clinical, therapeutic, or diagnostic use in humans or animals. Not for animal or human consumption.

Note

Purchasers shall not, and agree not to enable third parties to, analyze, copy, reverse engineer or otherwise attempt to determine the structure or sequence of the product.

DATA IMAGES

GTx01471-07 FCM Image

FACS analysis of human peripheral blood lymphocytes using GTx01471-07 IL2 Receptor alpha antibody [BC96] (APC).

Right panel : co-stained with IL2 Receptor alpha antibody [BC96] (APC) and Human CD4 antibody (FITC)

Left panel : co-stained with isotype control and Human CD4 antibody (FITC)

antibody amount : 0.125 μ g (5 μ l)



For full product information, images and publications, please visit our [website](#).