

IL2 Receptor alpha antibody [PC61.5] (APC-Cy7)

Cat. No. GTX01472-15

Host	Rat
Clonality	Monoclonal
Isotype	IgG1
Applications	FCM
Reactivity	Mouse

References (10)

Package

100 µg

PRODUCT

Summary

The PC61.5 antibody is specific for mouse CD25, a 55 kDa surface protein also known as the Interleukin-2 Receptor alpha chain, or IL-2R alpha. CD25 may bind IL-2 by itself, although with low affinity and without induction of cell signaling. CD25 is also expressed within a high-affinity complex, along with the IL-2R beta chain (CD122) and the common gamma chain (CD132), to form a signaling receptor complex. Expression of CD25 varies during developmental stages of T and B cells, is induced on activated mature T and B cells, and is present on subsets of dendritic cells. CD25 signaling as part of the IL-2 receptor complex triggers T cell activation and proliferation, as well as modulating the differentiation and function of Th17 cells, T regulatory (Treg) cells, and dendritic cells. The PC61.5 antibody is used as a marker for T cells, B cells and dendritic cell subsets. Expression of CD25, CD4 and the transcription factor Foxp3 is regarded as a phenotypic signature for Treg cells. As such, this antibody is widely used to distinguish Treg cells from naive or conventional T cells which are CD25. This clone has also been reported for depletion of Treg cells in vivo.

Applications

Application Note

*Optimal dilutions/concentrations should be determined by the researcher.

Suggested dilution Recommended dilution

FCM	Assay dependent
-----	-----------------

Not tested in other applications.

Properties

Form	Liquid
Buffer	10mM NaH ₂ PO ₄ , 150mM NaCl, 0.1% Gelatin
Preservative	0.09% Sodium azide
Storage	Store as concentrated solution. Centrifuge briefly prior to opening vial. Store at 4°C. DO NOT FREEZE. Protect from light.
Concentration	0.2 mg/ml (Please refer to the vial label for the specific concentration.)
Purification	Purified by affinity chromatography From tissue culture supernatant
Conjugation	Allophycocyanin-Cyanine7 (APC-Cy7) Wavelength



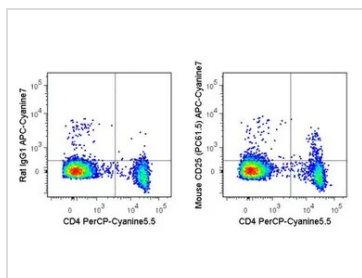
For full product information, images and publications, please visit our [website](#).

For laboratory research use only. Not for any clinical, therapeutic, or diagnostic use in humans or animals. Not for animal or human consumption.

Note

Purchasers shall not, and agree not to enable third parties to, analyze, copy, reverse engineer or otherwise attempt to determine the structure or sequence of the product.

DATA IMAGES

**GTX01472-15 FCM Image**

FACS analysis of mouse C57Bl/6 splenocytes using GTX01472-15 IL2 Receptor alpha antibody [PC61.5] (APC-Cy7).

Right panel : co-stained with IL2 Receptor alpha antibody [PC61.5] (APC-Cy7) and Mouse CD4 antibody (PerCP-Cy5.5)

Left panel : co-stained with isotype control and Mouse CD4 antibody (PerCP-Cy5.5)
antibody amount : 0.25 μ g (5 μ l)



For full product information, images and publications, please visit our [website](#).