

TER-119 antibody [TER-119] (PerCP-Cy5.5)

Cat. No. GTX01475-11

Host	Rat
Clonality	Monoclonal
Isotype	IgG2b
Applications	FCM
Reactivity	Mouse

References (7)

Package

100 µg

PRODUCT

Summary

The TER-119 antibody is named for the antigen to which it binds, a 52 kDa surface protein that is associated with glycophorin-A. TER-119 is considered to be a lineage marker for later stages of erythroid cell development, as its expression begins at the pro-erythroblast stage. TER-119 antigen is not expressed at either BFU-E or CFU-E stages, i.e. prior to the pro-erythroblast stage.

Applications

Application Note

*Optimal dilutions/concentrations should be determined by the researcher.

Suggested dilution

Recommended dilution

FCM

Assay dependent

Not tested in other applications.

Properties

Form	Liquid
Buffer	10mM NaH ₂ PO ₄ , 150mM NaCl, 0.1% Gelatin
Preservative	0.09% Sodium azide
Storage	Store as concentrated solution. Centrifuge briefly prior to opening vial. Store at 4°C. DO NOT FREEZE. Protect from light.
Concentration	0.2 mg/ml (Please refer to the vial label for the specific concentration.)
Purification	Purified by affinity chromatography From tissue culture supernatant
Conjugation	Peridinin-chlorophyll proteins-Cyanine5.5 (PerCP-Cy5.5) Wavelength

Note

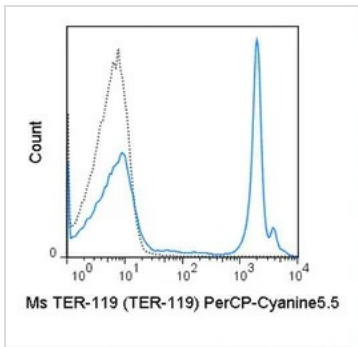
For laboratory research use only. Not for any clinical, therapeutic, or diagnostic use in humans or animals. Not for animal or human consumption.

Purchasers shall not, and agree not to enable third parties to, analyze, copy, reverse engineer or otherwise attempt to determine the structure or sequence of the product.



For full product information, images and publications, please visit our [website](#).

DATA IMAGES

**GTX01475-11 FCM Image**

FACS analysis of mouse C57Bl/6 bone marrow cells using GTX01475-11 TER-119 antibody [TER-119] (PerCP-Cy5.5).

Solid line : primary antibody

Dashed line : isotype control

antibody amount : 0.25 μ g (5 μ l)



For full product information, images and publications, please visit our [website](#).