

NK1.1 antibody [PK136] (FITC)

Cat. No. GTX01478-06

Host	Mouse
Clonality	Monoclonal
Isotype	IgG2a
Applications	FCM
Reactivity	Mouse

References (9)

Package

100 µg

PRODUCT

Summary

The PK136 antibody is specific for mouse NK1.1, a type II transmembrane lectin-like receptor and member of the killer cell lectin-like receptor (KLR) family. NK1.1 is prominently expressed on natural killer (NK) cells, and is correlated with NK cytotoxic effects toward virus-infected cells and tumor cells. NK1.1 is expressed on subsets of NKT cells in certain mouse strains (C57BL/6, FVB/N, and NZB), yet absent from others (AKR, BALB/c, CBA/J, C3H, DBA/1, DBA/2, NOD, SJL, and 129). Putative subsets of NK cells and their expression of NK1.1 antigen are of continuing interest, including NK1.1+/CD117+ (c-Kit) cells reported to be immunosuppressive for CD8+ T cells in a mechanism involving PD-1 and PD-L1. The PK136 antibody may be used for detection of NK1.1 expression on mouse strains including CE, B6, NZB, C58, Ma/My, ST, SJL, and FVB. The antibody is reported to react with an epitope common to NKR-P1B and NKR-P1C alloantigenic forms of NK1.1.

Applications

Application Note

*Optimal dilutions/concentrations should be determined by the researcher.

Suggested dilution	Recommended dilution
FCM	Assay dependent

Not tested in other applications.

Properties

Form	Liquid
Buffer	10mM NaH ₂ PO ₄ , 150mM NaCl, 0.1% Gelatin
Preservative	0.09% Sodium azide
Storage	Store as concentrated solution. Centrifuge briefly prior to opening vial. Store at 4°C. DO NOT FREEZE. Protect from light.
Concentration	0.5 mg/ml (Please refer to the vial label for the specific concentration.)
Purification	Purified by affinity chromatography From tissue culture supernatant
Conjugation	Fluorescein isothiocyanate (FITC) Wavelength



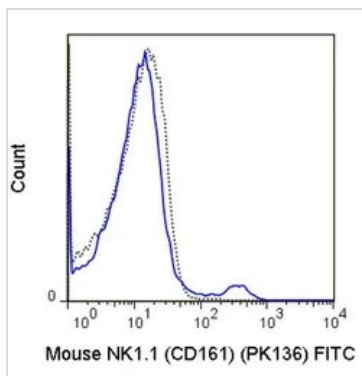
For full product information, images and publications, please visit our [website](#).

For laboratory research use only. Not for any clinical, therapeutic, or diagnostic use in humans or animals. Not for animal or human consumption.

Note

Purchasers shall not, and agree not to enable third parties to, analyze, copy, reverse engineer or otherwise attempt to determine the structure or sequence of the product.

DATA IMAGES

**GTX01478-06 FCM Image**

FACS analysis of mouse C57Bl/6 splenocytes using GTX01478-06 NK1.1 antibody [PK136] (FITC).

Solid line : primary antibody

Dashed line : isotype control

antibody amount : 0.5 μ g (5 μ l)



For full product information, images and publications, please visit our [website](#).