

## TCR beta antibody [H57-597] (FITC)

Cat. No. GTX01479-06

Host	Armenian Hamster
Clonality	Monoclonal
Isotype	IgG
Applications	FCM
Reactivity	Mouse

References ( 5 )

Package

100 µg

## PRODUCT

## Summary

The H57-597 antibody is specific for the beta chain of the mouse T cell Receptor (TCR). This cell surface protein combines with a second protein chain (alpha chain) to form the alpha-beta TCR that is expressed by NK1.1+ thymocytes, NKT cells, and the majority of peripheral T cells. A small number of T cells may express an alternative heteromer of gamma/delta protein chains, known as the g/d TCR. These receptors participate in a complex with CD3, and with the co-receptors CD4 or CD8, to recognize and respond to antigens bound to MHC molecules on antigen-presenting cells. Such interactions promote T cell receptor signaling (T cell activation) and can result in a number of cellular responses including proliferation, differentiation, production of cytokines or activation-induced cell death. The H57-597 antibody is used as a phenotypic marker for T cells expressing the alpha-beta TCR. It is also widely used to cross-link surface TCR and thereby mimic TCR-mediated cell activation or induction of apoptosis. The antibody does not cross-react with cells expressing the g/d TCR.

## Applications

## Application Note

\*Optimal dilutions/concentrations should be determined by the researcher.

Suggested dilution	Recommended dilution
--------------------	----------------------

FCM	Assay dependent
-----	-----------------

Not tested in other applications.

## Properties

Form	Liquid
Buffer	10mM NaH <sub>2</sub> PO <sub>4</sub> , 150mM NaCl, 0.1% Gelatin
Preservative	0.09% Sodium azide
Storage	Store as concentrated solution. Centrifuge briefly prior to opening vial. Store at 4°C. DO NOT FREEZE. Protect from light.
Concentration	0.5 mg/ml (Please refer to the vial label for the specific concentration.)
Purification	Purified by affinity chromatography From tissue culture supernatant
Conjugation	Fluorescein isothiocyanate (FITC) <a href="#">Wavelength</a>



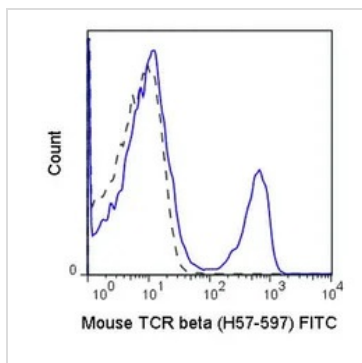
For full product information, images and publications, please visit our [website](#).

For laboratory research use only. Not for any clinical, therapeutic, or diagnostic use in humans or animals. Not for animal or human consumption.

## Note

Purchasers shall not, and agree not to enable third parties to, analyze, copy, reverse engineer or otherwise attempt to determine the structure or sequence of the product.

## DATA IMAGES



### GTX01479-06 FCM Image

FACS analysis of mouse C57Bl/6 splenocytes using GTX01479-06 TCR beta antibody [H57-597] (FITC).

Solid line : primary antibody

Dashed line : isotype control

antibody amount : 0.25  $\mu$ g (5  $\mu$ l)



For full product information, images and publications, please visit our [website](#).