

TCR beta antibody [H57-597] (PE)

Cat. No. GTX01479-08

Host	Armenian Hamster
Clonality	Monoclonal
Isotype	IgG
Applications	FCM
Reactivity	Mouse

References (5)
 Package
 100 µg

PRODUCT

Summary

The H57-597 antibody is specific for the beta chain of the mouse T cell Receptor (TCR). This cell surface protein combines with a second protein chain (alpha chain) to form the alpha-beta TCR that is expressed by NK1.1+ thymocytes, NKT cells, and the majority of peripheral T cells. A small number of T cells may express an alternative heteromer of gamma/delta protein chains, known as the g/d TCR. These receptors participate in a complex with CD3, and with the co-receptors CD4 or CD8, to recognize and respond to antigens bound to MHC molecules on antigen-presenting cells. Such interactions promote T cell receptor signaling (T cell activation) and can result in a number of cellular responses including proliferation, differentiation, production of cytokines or activation-induced cell death. The H57-597 antibody is used as a phenotypic marker for T cells expressing the alpha-beta TCR. It is also widely used to cross-link surface TCR and thereby mimic TCR-mediated cell activation or induction of apoptosis. The antibody does not cross-react with cells expressing the g/d TCR.

Applications

Application Note

*Optimal dilutions/concentrations should be determined by the researcher.

Suggested dilution Recommended dilution

FCM	Assay dependent
-----	-----------------

Not tested in other applications.

Properties

Form	Liquid
Buffer	10mM NaH ₂ PO ₄ , 150mM NaCl, 0.1% Gelatin
Preservative	0.09% Sodium azide
Storage	Store as concentrated solution. Centrifuge briefly prior to opening vial. Store at 4°C. DO NOT FREEZE. Protect from light.
Concentration	0.2 mg/ml (Please refer to the vial label for the specific concentration.)
Purification	Purified by affinity chromatography From tissue culture supernatant
Conjugation	Phycoerythrin (PE) Wavelength



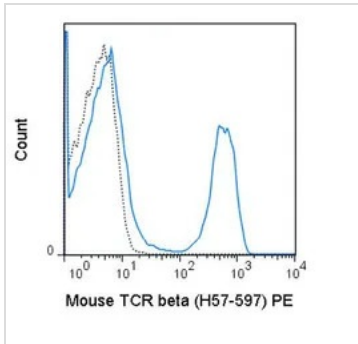
For full product information, images and publications, please visit our [website](#).

For laboratory research use only. Not for any clinical, therapeutic, or diagnostic use in humans or animals. Not for animal or human consumption.

Note

Purchasers shall not, and agree not to enable third parties to, analyze, copy, reverse engineer or otherwise attempt to determine the structure or sequence of the product.

DATA IMAGES

**GTX01479-08 FCM Image**

FACS analysis of mouse C57Bl/6 splenocytes using GTX01479-08 TCR beta antibody [H57-597] (PE).

Solid line : primary antibody

Dashed line : isotype control

antibody amount : 0.25 μ g (5 μ l)



For full product information, images and publications, please visit our [website](#).