

Fc epsilon R1 alpha antibody [MAR-1] (FITC)

Cat. No. GTX01480-06

Host	Armenian Hamster
Clonality	Monoclonal
Isotype	IgG
Applications	FCM
Reactivity	Mouse

References (3)

Package

100 µg

PRODUCT

Summary

The MAR-1 antibody reacts with the Fc epsilon Receptor I alpha chain (FcεRIα), a transmembrane protein member of the Ig superfamily. This chain, together with a beta chain and two gamma chains form a tetrameric complex that supports IgE-mediated signaling and subsequent release of chemical mediators of allergy and immediate hypersensitivity. FcεRIα is upregulated in the presence of IgE on those cell types which express it, such as Mast cells and Basophils. The MAR-1 antibody is widely used both in flow cytometry and for depletion of cells in vitro / in vivo.

Applications

Application Note

*Optimal dilutions/concentrations should be determined by the researcher.

Suggested dilution	Recommended dilution
FCM	Assay dependent

Not tested in other applications.

Properties

Form	Liquid
Buffer	10mM NaH ₂ PO ₄ , 150mM NaCl, 0.1% Gelatin
Preservative	0.09% Sodium azide
Storage	Store as concentrated solution. Centrifuge briefly prior to opening vial. Store at 4°C. DO NOT FREEZE. Protect from light.
Concentration	0.5 mg/ml (Please refer to the vial label for the specific concentration.)
Purification	Purified by affinity chromatography From tissue culture supernatant
Conjugation	Fluorescein isothiocyanate (FITC) Wavelength

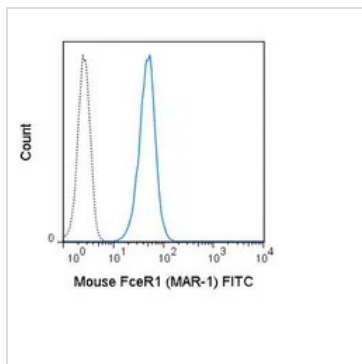
Note

For laboratory research use only. Not for any clinical, therapeutic, or diagnostic use in humans or animals. Not for animal or human consumption.

Purchasers shall not, and agree not to enable third parties to, analyze, copy, reverse engineer or otherwise attempt to determine the structure or sequence of the product.



For full product information, images and publications, please visit our [website](#).

DATA IMAGES

GTX01480-06 FCM Image

FACS analysis of MC/9 cells using GTX01480-06 Fc epsilon R1 alpha antibody [MAR-1] (FITC).

Solid line : primary antibody

Dashed line : isotype control

antibody amount : 0.125 μ g (5 μ l)



For full product information, images and publications, please visit our [website](#).