

## CD23 antibody [EBVCS-5] (APC)

Cat. No. GTX01482-07

<b>Host</b>	Mouse
<b>Clonality</b>	Monoclonal
<b>Isotype</b>	IgG1
<b>Applications</b>	FCM
<b>Reactivity</b>	Human

References ( 5 )  
 Package  
 100 test

## PRODUCT

## Summary

The EBVCS-5 antibody is specific for human CD23, also known as the low affinity IgE receptor (FcεRII), a 45 kDa type II transmembrane protein and member of the immunoglobulin superfamily. It is expressed on most B cells and is upregulated upon activation. It is also present on mantle zone B cells, eosinophils, monocytes and a subset of T cells and platelets. CD23 plays a role in B cell development and differentiation, and also functions to regulate IgE production. Soluble secreted forms of CD23 have been reported to bind IgE, stimulate release of pro-inflammatory cytokines from monocytes, and play a role in B cell differentiation.

## Applications

## Application Note

\*Optimal dilutions/concentrations should be determined by the researcher.

## Suggested dilution

## Recommended dilution

FCM	0.125 µg (5 µl) for 10 <sup>5</sup> -10 <sup>8</sup> cells in 100 µl sample per test
-----	--

Not tested in other applications.

## Properties

<b>Form</b>	Liquid
-------------	--------

<b>Buffer</b>	10mM NaH <sub>2</sub> PO <sub>4</sub> , 150mM NaCl, 0.1% Gelatin
---------------	--

<b>Preservative</b>	0.09% Sodium azide
---------------------	--------------------

<b>Storage</b>	Store as concentrated solution. Centrifuge briefly prior to opening vial. Store at 4°C. DO NOT FREEZE. Protect from light.
----------------	--

<b>Concentration</b>	0.025 mg/ml (Please refer to the vial label for the specific concentration.)
----------------------	--

<b>Purification</b>	Purified by affinity chromatography From tissue culture supernatant
---------------------	--

<b>Conjugation</b>	Allophycocyanin (APC) <a href="#">Wavelength</a>
--------------------	--

## Note

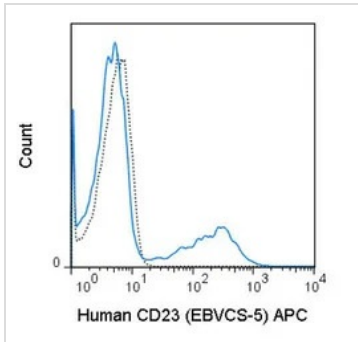
For laboratory research use only. Not for any clinical, therapeutic, or diagnostic use in humans or animals. Not for animal or human consumption.

Purchasers shall not, and agree not to enable third parties to, analyze, copy, reverse engineer or otherwise attempt to determine the structure or sequence of the product.



For full product information, images and publications, please visit our [website](#).

## DATA IMAGES

**GTX01482-07 FCM Image**

FACS analysis of human peripheral blood lymphocytes using GTX01482-07 CD23 antibody [EBVCS-5] (APC).

Solid line : primary antibody

Dashed line : isotype control

antibody amount : 0.125  $\mu$ g (5  $\mu$ l)



For full product information, images and publications, please visit our [website](#).