

## CD8 alpha antibody [Hit8a] (FITC)

Cat. No. GTX01486-06

<b>Host</b>	Mouse
<b>Clonality</b>	Monoclonal
<b>Isotype</b>	IgG1
<b>Applications</b>	FCM
<b>Reactivity</b>	Human, Chimpanzee, Rhesus Monkey

References ( 3 )  
 Package  
 100 test

## PRODUCT

## Summary

The Hit8a antibody is specific for the 32-34 kDa alpha chain of human CD8, known as CD8a or CD8 alpha. CD8a can form a homodimer (CD8 alpha-alpha), but is more commonly expressed as a heterodimer with a second chain known as CD8b or CD8 beta. CD8 acts as a co-receptor for antigen recognition and subsequent T cell activation that is initiated upon binding of the T cell receptor (TCR) to antigen-bearing MHC Class I molecules. The cytoplasmic domains of CD8 provide binding sites for the tyrosine kinase lck, facilitating intracellular signaling events that lead to T cell activation, development, and cytotoxic effector functions. CD8+ cytotoxic T cells (CTLs) play an important role in inducing cell death of tumor cells, as well as cells infected by virus, bacteria or parasites. The Hit8a antibody is widely used as a phenotypic marker for CD8 on cytotoxic T cells, thymocytes, as well as on certain cell types that do not also express the TCR, including some NK cells and lymphoid dendritic cells. If used together with an alternative Anti-Human CD8a clone RPA-T8, the Hit8a antibody will not block binding of RPA-T8 to CD8a.

## Applications

## Application Note

\*Optimal dilutions/concentrations should be determined by the researcher.

Suggested dilution	Recommended dilution
FCM	0.5 µg (5 µl) for 10 <sup>5</sup> -10 <sup>8</sup> cells in 100 µl sample per test

Not tested in other applications.

## Properties

<b>Form</b>	Liquid
<b>Buffer</b>	10mM NaH <sub>2</sub> PO <sub>4</sub> , 150mM NaCl, 0.1% Gelatin
<b>Preservative</b>	0.09% Sodium azide
<b>Storage</b>	Store as concentrated solution. Centrifuge briefly prior to opening vial. Store at 4°C. DO NOT FREEZE. Protect from light.
<b>Concentration</b>	0.1 mg/ml (Please refer to the vial label for the specific concentration.)
<b>Purification</b>	Purified by affinity chromatography From tissue culture supernatant
<b>Conjugation</b>	Fluorescein isothiocyanate (FITC) <a href="#">Wavelength</a>

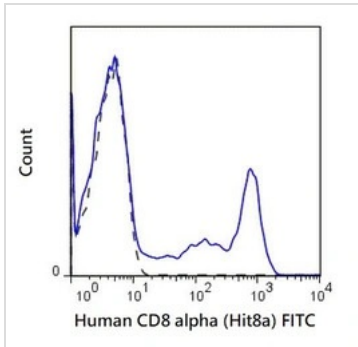


For full product information, images and publications, please visit our [website](#).

For laboratory research use only. Not for any clinical, therapeutic, or diagnostic use in humans or animals. Not for animal or human consumption.

**Note**  
Purchasers shall not, and agree not to enable third parties to, analyze, copy, reverse engineer or otherwise attempt to determine the structure or sequence of the product.

## DATA IMAGES

**GTX01486-06 FCM Image**

FACS analysis of human peripheral blood lymphocytes using GTX01486-06 CD8 alpha antibody [Hit8a] (FITC).

Solid line : primary antibody

Dashed line : isotype control

antibody amount : 0.5  $\mu$ g (5  $\mu$ l)



For full product information, images and publications, please visit our [website](#).