

## HLA-DR antibody [LN3] (FITC)

**Cat. No. GTX01489-06**

<b>Host</b>	Mouse
<b>Clonality</b>	Monoclonal
<b>Isotype</b>	IgG2b
<b>Applications</b>	FCM
<b>Reactivity</b>	Human

References ( 1 )

Package

100 test

## PRODUCT

## Summary

The LN3 antibody reacts with a member of the human MHC Class II antigens, HLA-DR. The HLA-DR antigen is expressed on human antigen presenting cells including B lymphocytes, monocytes, macrophages, dendritic cells, and activated T lymphocytes. HLA-DR is a dimeric protein composed of alpha and beta subunits and is involved in the presentation of peptide antigens to CD4+ T cells.

## Applications

## Application Note

\*Optimal dilutions/concentrations should be determined by the researcher.

## Suggested dilution

## Recommended dilution

FCM

0.25 µg (5 µl) for 10<sup>5</sup>-10<sup>8</sup> cells in 100 µl sample per test

Not tested in other applications.

## Properties

## Form

Liquid

## Buffer

10mM NaH<sub>2</sub>PO<sub>4</sub>, 150mM NaCl, 0.1% Gelatin

## Preservative

0.09% Sodium azide

## Storage

Store as concentrated solution. Centrifuge briefly prior to opening vial. Store at 4°C. DO NOT FREEZE. Protect from light.

## Concentration

0.05 mg/ml (Please refer to the vial label for the specific concentration.)

## Purification

Purified by affinity chromatography  
From tissue culture supernatant

## Conjugation

Fluorescein isothiocyanate (FITC) [Wavelength](#)

## Note

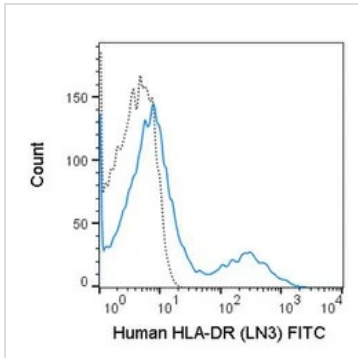
For laboratory research use only. Not for any clinical, therapeutic, or diagnostic use in humans or animals. Not for animal or human consumption.

Purchasers shall not, and agree not to enable third parties to, analyze, copy, reverse engineer or otherwise attempt to determine the structure or sequence of the product.



For full product information, images and publications, please visit our [website](#).

## DATA IMAGES

**GTX01489-06 FCM Image**

FACS analysis of human peripheral blood lymphocytes using GTX01489-06 HLA-DR antibody [LN3] (FITC).

Solid line : primary antibody

Dashed line : isotype control

antibody amount : 0.25  $\mu$ g (5  $\mu$ l)



For full product information, images and publications, please visit our [website](#).