

## IL12B / IL12 p40 antibody [C17-8] (APC)

Cat. No. GTX01491-07

Host	Rat
Clonality	Monoclonal
Isotype	IgG2a
Applications	FCM
Reactivity	Mouse

References ( 9 )

Package

100 µg

## PRODUCT

## Summary

The C17.8 antibody is specific for the 40 kDa (p40) protein subunit shared by the cytokines IL-12 and IL-23. To form IL-12, p40 assembles with a separate 35 kDa protein known as p35, resulting in a 70 kDa functional cytokine. IL-12 is secreted by activated monocytes, macrophages, and dendritic cells, and has been shown to target naive, resting CD4+ T cells to promote their proliferation and secretion of cytokines. IL-23 contains the p40 subunit in combination with a 19 kDa protein chain, p19; its primary source being activated dendritic cells and other antigen-presenting cells. IL-23 appears to target different cell types than IL-12, acting on memory CD4+ T cells to induce a strong proliferative response and contributing to the generation and expansion of Th17 cells. Like the cytokines themselves, the receptors for IL-12 and IL-23 share one subunit, as well as containing distinct cytokine-specific subunits. As the C17.8 antibody binds to a shared subunit of both IL-12 and IL-23, it may be used as a marker for either IL-12 or IL-23 expression in dendritic cells, monocytes and macrophages, and is widely used for neutralization of activity associated with either cytokine.

## Applications

## Application Note

\*Optimal dilutions/concentrations should be determined by the researcher.

Suggested dilution	Recommended dilution
FCM	Assay dependent

Not tested in other applications.

## Properties

Form	Liquid
Buffer	10mM NaH <sub>2</sub> PO <sub>4</sub> , 150mM NaCl, 0.1% Gelatin
Preservative	0.09% Sodium azide
Storage	Store as concentrated solution. Centrifuge briefly prior to opening vial. Store at 4°C. DO NOT FREEZE. Protect from light.
Concentration	0.2 mg/ml (Please refer to the vial label for the specific concentration.)
Purification	Purified by affinity chromatography From tissue culture supernatant
Conjugation	Allophycocyanin (APC) <a href="#">Wavelength</a>



For full product information, images and publications, please visit our [website](#).

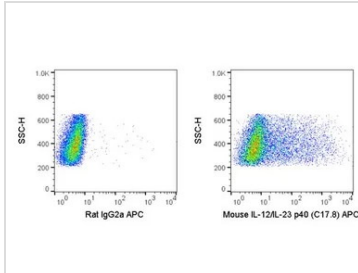
Date 2026 / 01 / 06 Page 1 of 2

For laboratory research use only. Not for any clinical, therapeutic, or diagnostic use in humans or animals. Not for animal or human consumption.

## Note

Purchasers shall not, and agree not to enable third parties to, analyze, copy, reverse engineer or otherwise attempt to determine the structure or sequence of the product.

## DATA IMAGES



### GTx01491-07 FCM Image

FACS analysis of mouse macrophages (stimulated in the presence of a protein transport inhibitor) using GTx01491-07 IL23 antibody [C17.8] (APC).

Right panel : primary antibody

Left panel : isotype control

antibody amount : 0.06µg (5 µl)



For full product information, images and publications, please visit our [website](#).