

## Integrin alpha 4 antibody [9F10] (PE)

Cat. No. GTX01494-08

Host	Mouse
Clonality	Monoclonal
Isotype	IgG1
Applications	FCM
Reactivity	Human

References ( 1 )  
Package  
100 test

## PRODUCT

## Summary

The 9F10 monoclonal antibody reacts with human CD49d, a 150kD integral membrane protein that is also known as integrin  $\alpha$ 4 (ITGA4). Together with integrin  $\beta$ 1 (CD29), CD49d forms the VLA-4 heterodimer that serves as a receptor for fibronectin and VCAM-1. VLA-4 is widely expressed on lymphocytes, monocytes, thymocytes, and NK cells. CD49d can also dimerize with integrin  $\beta$ 7 to form a receptor that binds the mucosal vascular addressin molecule, MAdCAM-1. CD49d is involved in cellular adhesion to other cells as well as extracellular matrix.

## Applications

## Application Note

\*Optimal dilutions/concentrations should be determined by the researcher.

Suggested dilution	Recommended dilution
FCM	0.25 $\mu$ g (5 $\mu$ l) for $10^5$ - $10^8$ cells in 100 $\mu$ l sample per test

Not tested in other applications.

## Properties

Form	Liquid
Buffer	10mM NaH <sub>2</sub> PO <sub>4</sub> , 150mM NaCl, 0.1% Gelatin
Preservative	0.09% Sodium azide
Storage	Store as concentrated solution. Centrifuge briefly prior to opening vial. Store at 4°C. DO NOT FREEZE. Protect from light.
Concentration	0.05 mg/ml (Please refer to the vial label for the specific concentration.)
Purification	Purified by affinity chromatography From tissue culture supernatant
Conjugation	Phycoerythrin (PE) <a href="#">Wavelength</a>

## Note

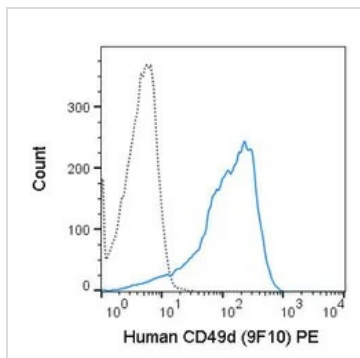
For laboratory research use only. Not for any clinical, therapeutic, or diagnostic use in humans or animals. Not for animal or human consumption.

Purchasers shall not, and agree not to enable third parties to, analyze, copy, reverse engineer or otherwise attempt to determine the structure or sequence of the product.



For full product information, images and publications, please visit our [website](#).

## DATA IMAGES



### GTX01494-08 FCM Image

FACS analysis of human peripheral blood lymphocytes using GTX01494-08 Integrin alpha 4 antibody [9F10] (PE).

Solid line : primary antibody

Dashed line : isotype control

antibody amount : 0.25  $\mu$ g (5  $\mu$ l)



For full product information, images and publications, please visit our [website](#).

Date 2025 / 07 / 03 Page 2 of 2