

## CD38 antibody [HB7] (PE)

Cat. No. GTX01499-08

<b>Host</b>	Mouse
<b>Clonality</b>	Monoclonal
<b>Isotype</b>	IgG1
<b>Applications</b>	FCM
<b>Reactivity</b>	Human

References ( 5 )

Package

100 test

## PRODUCT

## Summary

The HB7 antibody is specific for human CD38, a 45 kDa type II transmembrane glycoprotein expressed on thymocytes, plasma cells, and monocytes as well as other non-hematopoietic cells. T and B lymphocyte expression is discontinuous and varies based on differentiation state – present on immature cells, low on intermediate stages, and high on activated mature cells. It is found on most CD34+ cells, but not on pluripotent stem cells. CD38 is an ectoenzyme that functions to catalyze the synthesis and hydrolysis of cyclic ADP-ribose and is involved in cell signaling, regulating cell adhesion, and activation. Additionally, CD38 has been shown to be a prognostic marker for some leukemias and other diseases.

## Applications

## Application Note

\*Optimal dilutions/concentrations should be determined by the researcher.

## Suggested dilution

## Recommended dilution

FCM	0.125 µg (5 µl) for 10 <sup>5</sup> -10 <sup>8</sup> cells in 100 µl sample per test
-----	--

Not tested in other applications.

## Properties

<b>Form</b>	Liquid
<b>Buffer</b>	10mM NaH <sub>2</sub> PO <sub>4</sub> , 150mM NaCl, 0.1% Gelatin
<b>Preservative</b>	0.09% Sodium azide
<b>Storage</b>	Store as concentrated solution. Centrifuge briefly prior to opening vial. Store at 4°C. DO NOT FREEZE. Protect from light.
<b>Concentration</b>	0.025 mg/ml (Please refer to the vial label for the specific concentration.)
<b>Purification</b>	Purified by affinity chromatography From tissue culture supernatant
<b>Conjugation</b>	Phycoerythrin (PE) <a href="#">Wavelength</a>

## Note

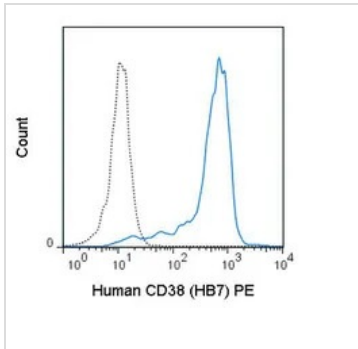
For laboratory research use only. Not for any clinical, therapeutic, or diagnostic use in humans or animals. Not for animal or human consumption.

Purchasers shall not, and agree not to enable third parties to, analyze, copy, reverse engineer or otherwise attempt to determine the structure or sequence of the product.



For full product information, images and publications, please visit our [website](#).

## DATA IMAGES

**GTX01499-08 FCM Image**

FACS analysis of human peripheral blood monocytes using GTX01499-08 CD38 antibody [HB7] (PE).

Solid line : primary antibody

Dashed line : isotype control

antibody amount : 0.125  $\mu$ g (5  $\mu$ l)



For full product information, images and publications, please visit our [website](#).