

Androgen Receptor antibody [GT1228]

Cat. No. GTX01536

Host	Rabbit
Clonality	Monoclonal
Isotype	IgG
Applications	WB, ICC/IF, IHC-P
Reactivity	Human, Mouse

References (1)
 Package
 100 µl

Applications

Application Note

*Optimal dilutions/concentrations should be determined by the researcher.

Suggested dilution	Recommended dilution
WB	1:500 - 1:2000
ICC/IF	1:50 - 1:200
IHC-P	1:50 - 1:200

Not tested in other applications.

Calculated MW 99 kDa. ([Note](#))

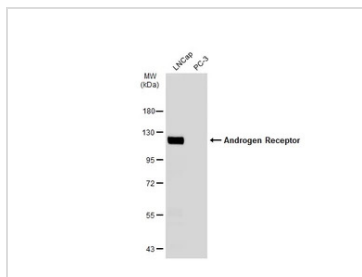
Properties

Form	Liquid
Buffer	PBS, 50% Glycerol
Preservative	0.09% Sodium azide
Storage	Store as concentrated solution. Centrifuge briefly prior to opening vial. For short-term storage (1-2 weeks), store at 4°C. For long-term storage, aliquot and store at -20°C or below. Avoid multiple freeze-thaw cycles.
Concentration	Batch dependent (Please refer to the vial label for the specific concentration.)
Immunogen	A synthesized peptide derived from human Androgen Receptor.
Purification	Purified by affinity chromatography
Conjugation	Unconjugated
Note	For laboratory research use only. Not for any clinical, therapeutic, or diagnostic use in humans or animals. Not for animal or human consumption. Purchasers shall not, and agree not to enable third parties to, analyze, copy, reverse engineer or otherwise attempt to determine the structure or sequence of the product.



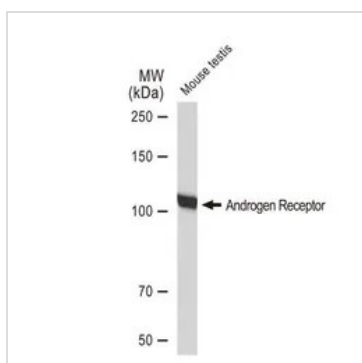
For full product information, images and publications, please visit our [website](#).

DATA IMAGES

**GTX01536 WB Image**

Various whole cell extracts (30 µg) were separated by 7.5% SDS-PAGE, and the membrane was blotted with Androgen Receptor antibody [GT1228] (GTX01536) diluted at 1:1000. The HRP-conjugated anti-rabbit IgG antibody (GTX213110-01) was used to detect the primary antibody.

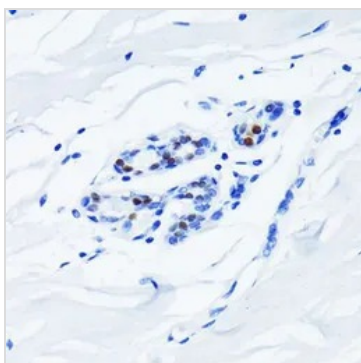
The observed M.W. is based on the publication: [PMID: 11306464](https://pubmed.ncbi.nlm.nih.gov/11306464/)

**GTX01536 WB Image**

WB analysis of mouse testis tissue lysate using GTX01536 Androgen Receptor antibody [GT1228].

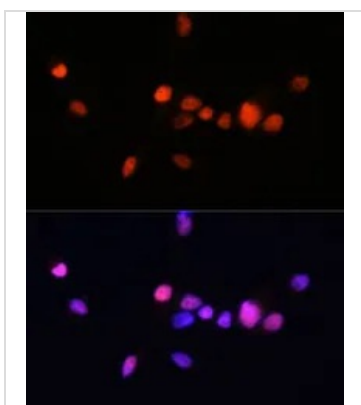
Dilution : 1:1000

Loading : 25 µg

**GTX01536 IHC-P Image**

IHC-P analysis of human breast tissue section using GTX01536 Androgen Receptor antibody [GT1228].

Dilution : 1:100

**GTX01536 ICC/IF Image**

ICC/IF analysis of LNCaP cells using GTX01536 Androgen Receptor antibody [GT1228].

Blue : DAPI



For full product information, images and publications, please visit our [website](https://www.genetex.com).