

## Bim antibody [GT1234]

**Cat. No. GTX01542**

|                    |                   |
|--------------------|-------------------|
| <b>Host</b>        | Rabbit            |
| <b>Clonality</b>   | Monoclonal        |
| <b>Isotype</b>     | IgG               |
| <b>Application</b> | WB                |
| <b>Reactivity</b>  | Human, Mouse, Rat |

Reference ( 1 )  
Package  
100 µl

### APPLICATION

#### Application Note

\*Optimal dilutions/concentrations should be determined by the researcher.

| Suggested dilution                | Recommended dilution |
|-----------------------------------|----------------------|
| WB                                | 1:500 - 1:2000       |
| Not tested in other applications. |                      |

**Calculated MW** 22 kDa. ( [Note](#) )

### PROPERTIES

|                      |  |
|----------------------|--|
| <b>Form</b>          | Liquid   |
| <b>Buffer</b>        | PBS, 50% Glycerol  |
| <b>Preservative</b>  | 0.02% Sodium azide   |
| <b>Storage</b>       | Store as concentrated solution. Centrifuge briefly prior to opening vial. For short-term storage (1-2 weeks), store at 4°C. For long-term storage, aliquot and store at -20°C or below. Avoid multiple freeze-thaw cycles. |
| <b>Concentration</b> | Batch dependent (Please refer to the vial label for the specific concentration.)   |
| <b>Immunogen</b>     | A synthesized peptide derived from human Bim.  |
| <b>Purification</b>  | Purified by affinity chromatography  |
| <b>Conjugation</b>   | Unconjugated   |

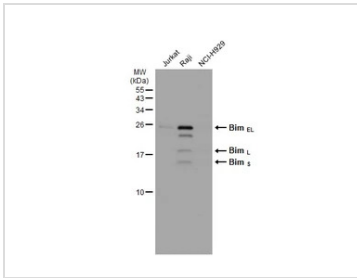
#### Note

For laboratory research use only. Not for any clinical, therapeutic, or diagnostic use in humans or animals. Not for animal or human consumption.

Purchasers shall not, and agree not to enable third parties to, analyze, copy, reverse engineer or otherwise attempt to determine the structure or sequence of the product.



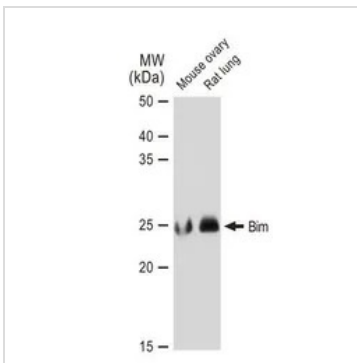
For full product information, images and publications, please visit our [website](#).

**DATA IMAGES**

**GTX01542 WB Image**

Various whole cell extracts (30 µg) were separated by 15% SDS-PAGE, and the membrane was blotted with Bim antibody [GT1234] (GTX01542) diluted at 1:1000. The HRP-conjugated anti-rabbit IgG antibody (GTX213110-01) was used to detect the primary antibody.

Multiple bands were observed 25 kDa, 15 kDa, and 10 kDa. It is possibly due to alternative splicing.

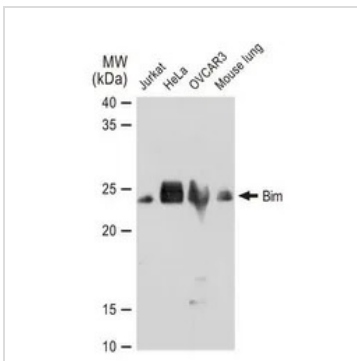
Reference: [PMID: 29358700](https://pubmed.ncbi.nlm.nih.gov/29358700/)


**GTX01542 WB Image**

WB analysis of various samples using GTX01542 Bim antibody [GT1234].

Dilution : 1:1000

Loading : 25 µg


**GTX01542 WB Image**

WB analysis of various samples using GTX01542 Bim antibody [GT1234].

Dilution : 1:1000

Loading : 25 µg



For full product information, images and publications, please visit our [website](https://www.genetex.com).