

## SARS-CoV-2 (COVID-19) Spike RBD protein, His tag (active)

Cat. No. GTX01546-pro

Application ELISA, Functional Assay

Species SARS Coronavirus 2

Reference ( 2 )

Package

100 µg

## APPLICATION

## Application Note

Activity was measured by its binding ability in a functional ELISA. Immobilized Recombinant SARS-CoV-2 (COVID-19) Spike RBD protein at 2 µg/mL (100 µL/well) can bind Recombinant Human ACE2 with a linear range of 8-80 ng/mL.

## PROPERTIES

Form Lyophilized powder

Buffer Reconstitute with distilled water to 0.1-0.5mg/ml. Lyophilized from 0.22µm-filtered PBS (pH7.4).

Preservative No preservative

Storage Store at -20°C or below. After reconstitution, keep as concentrated solution. Avoid freeze-thaw cycles.

Region/Sequence Arg319-Phe541 of SARS-CoV-2 (COVID-19) Spike RBD protein (Accession #YP\_009724390.1) fused with a 6×His tag at the C-terminus.

Expression System HEK293 cells

Purity &gt; 95% by SDS-PAGE

Endotoxin &lt; 0.1 EU/µg (determined by LAL method)

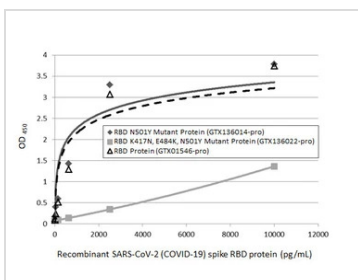
Conjugation Unconjugated

## Note

For laboratory research use only. Not for any clinical, therapeutic, or diagnostic use in humans or animals. Not for animal or human consumption.

Purchasers shall not, and agree not to enable third parties to, analyze, copy, reverse engineer or otherwise attempt to determine the structure or sequence of the product.

## DATA IMAGES

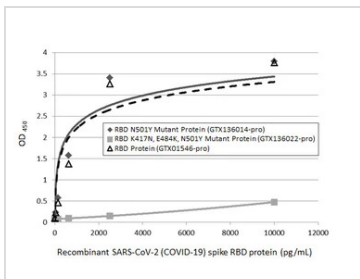


## GTX01546-pro ELISA Image

Sandwich ELISA detection of recombinant SARS-CoV-2 (COVID-19) Spike RBD (N501Y Mutant) protein, His tag (active) (GTX136014-pro), SARS-CoV-2 (COVID-19) Spike RBD (K417N, E484K, N501Y Mutant) protein, His tag (active) (GTX136022-pro), and SARS-CoV-2 (COVID-19) Spike RBD protein, His tag (active) (GTX01546-pro) using SARS-CoV-2 (COVID-19) Spike RBD antibody [HL1014] (GTX635807) as capture antibody at concentration of 5 µg/mL and SARS-CoV-2 (COVID-19) Spike RBD antibody [HL1004] (HRP) (GTX635793-01) as detection antibody at concentration of 1 µg/mL.

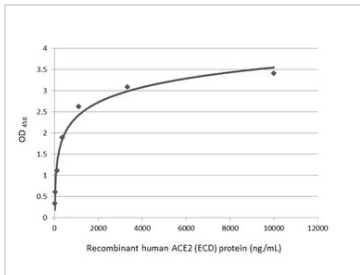


For full product information, images and publications, please visit our [website](#).



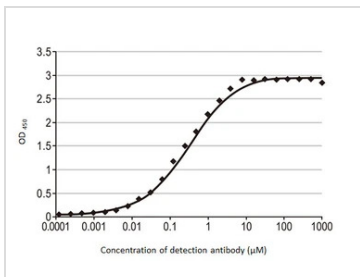
#### GTX01546-pro ELISA Image

Sandwich ELISA detection of recombinant SARS-CoV-2 (COVID-19) Spike RBD (N501Y Mutant) protein, His tag (active) (GTX136014-pro), SARS-CoV-2 (COVID-19) Spike RBD (K417N, E484K, N501Y Mutant) protein, His tag (active) (GTX136022-pro), and SARS-CoV-2 (COVID-19) Spike RBD protein, His tag (active) (GTX01546-pro) using SARS-CoV-2 (COVID-19) Spike RBD antibody [HL1014] (GTX635807) as capture antibody at concentration of 5 µg/mL and SARS-CoV-2 (COVID-19) Spike RBD antibody [HL1003] (HRP) (GTX635792-01) as detection antibody at concentration of 1 µg/mL.



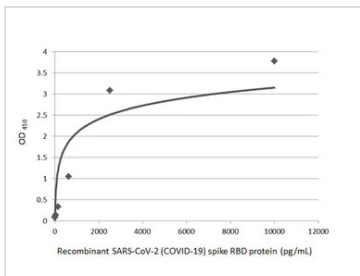
#### GTX01546-pro Functional Assay Image

Functional ELISA analysis of immobilized recombinant SARS-CoV-2 (COVID-19) Spike RBD protein, His tag (active) (GTX01546-pro) (coated at 2 µg/mL) binding to soluble recombinant Human ACE2 (ECD) protein, mouse IgG Fc tag (GTX135683-pro) (4.5-10000 ng/mL). Bound protein was detected by ACE2 antibody [N1N2], N-term (GTX101395) (0.5 µg/mL) and Rabbit IgG antibody (HRP) (GTX213110-01) (1:10000) detected bound primary antibody.



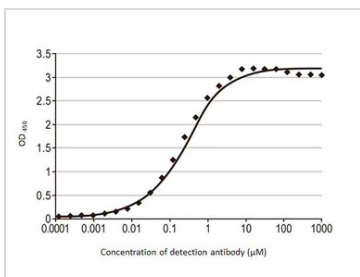
#### GTX01546-pro ELISA Image

Indirect ELISA analysis performed by coating plate with recombinant SARS-CoV-2 (COVID-19) Spike RBD protein, His tag (active) (GTX01546-pro) (50 ng). Coated protein was probed with SARS-CoV-2 (COVID-19) Spike RBD antibody [HL1014] (GTX635807) (1000-1.19\*10<sup>-4</sup> µM). Rabbit IgG antibody (HRP) (GTX213110-01) (1:10000) was used to detect bound primary antibody.  
EC50 : 0.24 µM



#### GTX01546-pro ELISA Image

Sandwich ELISA detection of recombinant SARS-CoV-2 (COVID-19) Spike RBD protein, His tag (active) (GTX01546-pro) using SARS-CoV-2 (COVID-19) Spike RBD antibody [HL1003] (GTX635792) as capture antibody at concentration of 5 µg/mL and HRP-conjugated SARS-CoV-2 (COVID-19) Spike RBD antibody [HL1002] (GTX635791) as detection antibody at concentration of 1 µg/mL.  
Please notice that GTX635791 needs to be conjugated to HRP to function as the detection antibody when paired with GTX635792. Please contact us for custom HRP-conjugated antibody.



#### GTX01546-pro ELISA Image

Indirect ELISA analysis performed by coating plate with recombinant SARS-CoV-2 (COVID-19) Spike RBD protein, His tag (active) (GTX01546-pro) (50 ng). Coated protein was probed with SARS-CoV-2 (COVID-19) Spike RBD antibody [HL1004] (GTX635793) (1000-1.19\*10<sup>-4</sup> µM). Rabbit IgG antibody (HRP) (GTX213110-01) (1:10000) was used to detect bound primary antibody.  
EC50 : 0.2 µM



For full product information, images and publications, please visit our [website](https://www.genetex.com).