

SARS-CoV-2 (COVID-19) Spike S1 protein, His and Avi tag (active)

Cat. No. GTX01548-pro**Applications** ELISA, Functional Assay**Species** SARS Coronavirus 2**References** (1)**Package**

100 µg

Applications

Application Note

Activity was measured by its binding ability in a functional ELISA. Immobilized SARS-CoV-2 (COVID-19) Spike S1 protein at 0.5 µg/mL (100 µL/well) can bind Recombinant Human ACE2 with a linear range of 0.06-0.25 µg/mL.

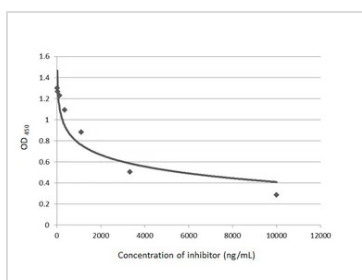
Properties

Form Lyophilized powder**Buffer** Reconstitute with distilled water to 0.1-0.5mg/ml. Lyophilized from 0.22µm-filtered PBS (pH7.4).**Preservative** No preservatives**Storage** Store at -20°C or below. After reconstitution, keep as concentrated solution. Avoid freeze-thaw cycles.**Region/Sequence** Gln14-Arg683 of SARS-CoV-2 (COVID-19) Spike S1 protein (Accession #YP_009724390.1) fused with a 6×His tag and Avi at the C-terminus.**Expression System** HEK293 cells**Purity** > 95% by SDS-PAGE**Endotoxin** < 0.1 EU/µg (determined by LAL method)**Conjugation** Unconjugated**Note**

For laboratory research use only. Not for any clinical, therapeutic, or diagnostic use in humans or animals. Not for animal or human consumption.

Purchasers shall not, and agree not to enable third parties to, analyze, copy, reverse engineer or otherwise attempt to determine the structure or sequence of the product.

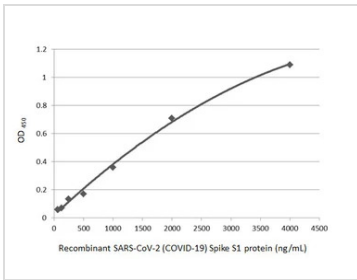
DATA IMAGES

**GTX01548-pro Functional Assay Image**

Inhibition ELISA analysis of immobilized recombinant SARS-CoV-2 (COVID-19) Spike S1 protein, His and Avi tag (active) (GTX01548-pro) (coated at 2 µg/mL) inhibiting by SARS-CoV-2 (COVID-19) Spike RBD antibody (GTX135709) (14-10000 ng/mL), and binding to soluble recombinant Human ACE2 (ECD) protein, mouse IgG Fc tag (GTX135683-pro) (3000 ng/mL). Bound protein was detected by Goat Anti-Mouse IgG antibody (HRP) (GTX213111-01) (1:10000).

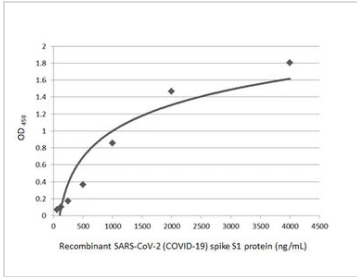


For full product information, images and publications, please visit our [website](#).



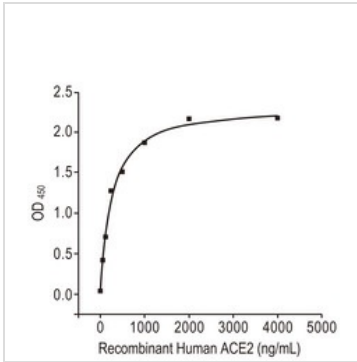
GTX01548-pro ELISA Image

Indirect ELISA analysis performed by coating plate with recombinant SARS-CoV-2 (COVID-19) Spike S1 protein, His and Avi tag (active) protein (GTX01548-pro) (4000-62.5 ng/mL). Coated protein probed with SARS-CoV-2 (COVID-19) Spike antibody (GTX135360) (1 µg/mL). Rabbit IgG antibody (HRP) (GTX213110-01) (1:10000) detected bound primary antibody.



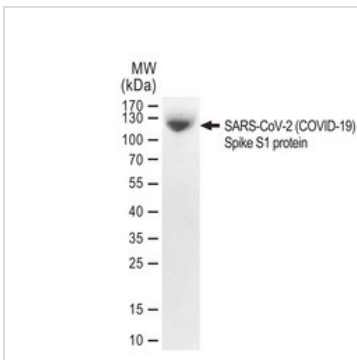
GTX01548-pro ELISA Image

Indirect ELISA analysis performed by coating plate with recombinant SARS-CoV-2 (COVID-19) spike S1 protein (GTX01548-pro) (62.5-4000 ng/mL). Coated protein probed with SARS-CoV-2 (COVID-19) Spike antibody (GTX135356) (1 µg/mL). Rabbit IgG antibody (HRP) (GTX213110-01) (1:10000) detected bound primary antibody.



GTX01548-pro Functional Assay Image

Functional ELISA analysis of immobilized GTX01548-pro SARS-CoV-2 (COVID-19) Spike S1 protein (active) at 0.5µg/mL (100 µL/well) can bind recombinant human ACE2 with a linear range of 0.06-0.25µg/mL.



GTX01548-pro Image

SDS-PAGE of GTX01548-pro SARS-CoV-2 (COVID-19) Spike S1 protein (active).



For full product information, images and publications, please visit our [website](https://www.genetex.com).