

Human ACE2 (ECD) protein, His and Avi tag (active)

Cat No. GTX01550-pro

Application	ELISA, Functional Assay
Species	Human

Package
100 µg

APPLICATION

Calculated MW 92 kDa. ([Note](#))

PROPERTIES

Form Lyophilized powder

Buffer Reconstitute with distilled water to a concentration of 0.1-0.5mg/ml. Lyophilized from 0.22µm-filtered PBS (pH7.4).

Preservative No preservative

Storage Store at -20°C or below. After reconstitution, keep as concentrated solution. Avoid freeze-thaw cycles.

Region/Sequence C-terminal 6×His and Avi tagged; Gln18-Ser740 of human ACE2 (Accession #Q9BYF1)

Expression System HEK293 cells

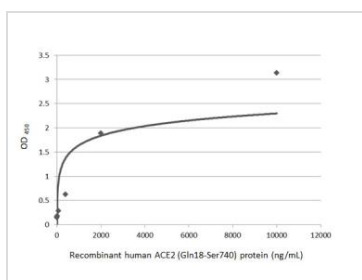
Purity > 95 % by SDS-PAGE

Endotoxin < 0.1 EU/µg (determined by LAL method)

Conjugation Unconjugated

Note For laboratory use only. Not for any clinical, therapeutic, or diagnostic use in humans or animals. Not for animal or human consumption.

DATA IMAGES

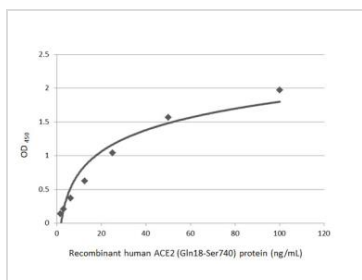


GTX01550-pro Functional Assay Image

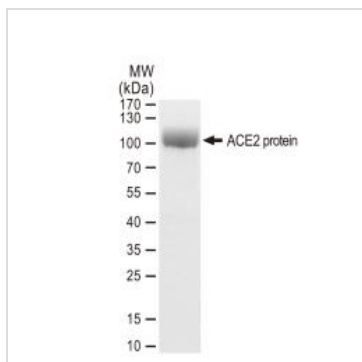
Functional ELISA analysis of immobilized recombinant SARS-CoV-2 (COVID-19) Spike RBD protein, His tag (active) (GTX01546-pro) (coated at 4 µg/mL) binding to soluble recombinant Human ACE2 (ECD) protein, His and Avi tag (GTX01550-pro) (0.64-10,000 ng/mL). Bound protein was detected by ACE2 antibody [N1N2], N-term (GTX101395) (0.1 µg/mL) and Rabbit IgG antibody (HRP) (GTX213110-01) (1:10000) detected bound primary antibody.



For full product information, images and publications, please visit our [website](#).


GTX01550-pro ELISA Image

Indirect ELISA analysis performed by coating plate with recombinant Human ACE2 (ECD) protein, His and Avi tag protein (GTX01550-pro) (1.56-100 ng/mL). Coated protein probed with ACE2 antibody [N1N2], N-term (GTX101395) (0.1 µg/mL). Rabbit IgG antibody (HRP) (GTX213110-01) (1:10000) detected bound primary antibody.


GTX01550-pro Image

SDS-PAGE of GTX01550-pro Human ACE2 (ECD) protein, His and Avi tag.



For full product information, images and publications, please visit our [website](#).