

Human IgG protein

Cat. No. GTX01552-pro**Species** Human**Package**
10 mg

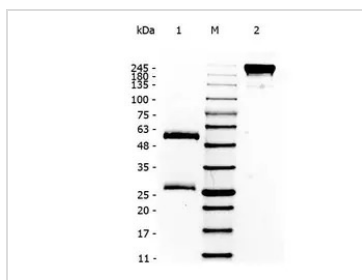
Properties

Form Lyophilized powder**Buffer** Reconstitute with distilled water. Lyophilized from 0.02M Potassium Phosphate pH7.2, 0.15M Sodium Chloride.**Preservative** 0.01% Sodium azide**Storage** Store at -20°C or below. After reconstitution, keep as concentrated solution. Avoid freeze-thaw cycles.**Expression System** Native protein from normal human serum**Purification** Purified by delipidation, salt fractionation, and ion exchange chromatography followed by extensive dialysis. From serum**Purity** Assay by immunoelectrophoresis resulted in a single precipitin arc against anti-Human IgG and anti-Human Serum.**Conjugation** Unconjugated**Note**

For laboratory research use only. Not for any clinical, therapeutic, or diagnostic use in humans or animals. Not for animal or human consumption.

Purchasers shall not, and agree not to enable third parties to, analyze, copy, reverse engineer or otherwise attempt to determine the structure or sequence of the product.

DATA IMAGES

**GTX01552-pro Image**

SDS-PAGE of GTX01552-pro Human IgG protein.

Lane 1 : Reduced Human IgG

Lane 2 : 5 µl OPAL Pre-stained Marker

Lane 3 : Non-reduced Human IgG

Loading : 1 µg per lane

For full product information, images and publications, please visit our [website](#).