

# Human IgM protein

**Cat. No. GTX01553-pro**
**Species** Human

**Package**  
1 mg

**Properties**
**Form** Liquid

**Buffer** 0.1M Tris Chloride pH8.0, 0.5M Sodium Chloride

**Preservative** 0.1% Sodium azide

**Storage** Store as concentrated solution. Aliquot and store at -20°C or below. Avoid freeze-thaw cycles.

**Concentration** 1 mg/ml (Please refer to the vial label for the specific concentration.)

**Expression System** Native protein from human serum

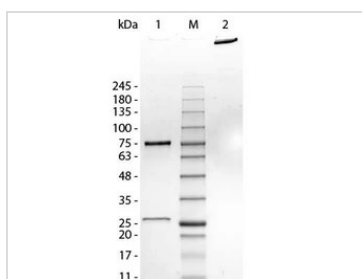
**Purification** Purified by delipidation, selective precipitation, and tandem molecular sieve chromatography followed by extensive dialysis.  
From serum

**Purity** Assayed by immunoelectrophoresis resulted in a single precipitin arc against anti-Human Serum and anti-Human IgM ( $\mu$  chain specific). No reaction was observed against anti-Human IgG F(c). Some light chain cross-reactivity will occur with anti-Human IgG.

**Conjugation** Unconjugated

**Note** For laboratory research use only. Not for any clinical, therapeutic, or diagnostic use in humans or animals. Not for animal or human consumption.

Purchasers shall not, and agree not to enable third parties to, analyze, copy, reverse engineer or otherwise attempt to determine the structure or sequence of the product.

**DATA IMAGES**

**GTX01553-pro Image**

SDS-PAGE of GTX01553-pro Human IgM protein.

Lane 1 : Reduced Human IgM

Lane 2 : 5  $\mu$ l of Opal Pre-stained Marker

Lane 3 : Non-Reduced Human IgM

Loading : 1  $\mu$ g per lane

For full product information, images and publications, please visit our [website](https://www.genetex.com).