

# SARS-CoV-2 (COVID-19) Spike S1 protein, His tag (active)

**Cat. No. GTX01554-pro**

**Applications** ELISA, Functional Assay

**Species** SARS Coronavirus 2

**Package**

100 µg

## Applications

### Application Note

Activity was measured by its binding ability in a functional ELISA. Immobilized Recombinant Human ACE2 at 2 µg/ml (100 µl/well ) can bind Recombinant nCoV-S1. The EC<sub>50</sub> of SARS-CoV-2 (COVID-19) Spike S1 protein is 0.25-0.45 µg/ml.

## Properties

**Form** Lyophilized powder

**Buffer** Reconstitute with distilled water to 0.1-0.5mg/ml. Lyophilized from 0.22µm-filtered PBS (pH7.4).

**Preservative** No preservatives

**Storage** Store at -20°C or below. After reconstitution, the protein solution is stable at -20 °C for 1 month, at 4°C for up to 1 week. Avoid freeze-thaw cycles.

**Region/Sequence** Val16-Arg685 of SARS-CoV-2 (COVID-19) Spike S1 protein (Accession #YP\_009724390.1) fused with a 6×His tag at the C-terminus.

**Expression System** HEK293 cells

**Purity** > 90% by SDS-PAGE

**Endotoxin** < 1.0 EU/µg (determined by the LAL method)

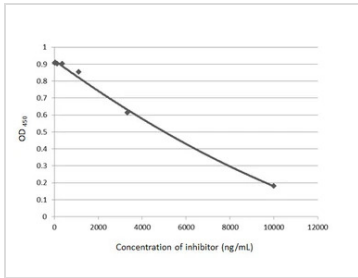
**Conjugation** Unconjugated

**Note** For laboratory research use only. Not for any clinical, therapeutic, or diagnostic use in humans or animals. Not for animal or human consumption.

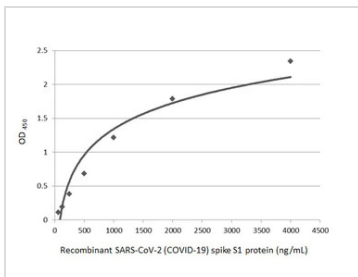
Purchasers shall not, and agree not to enable third parties to, analyze, copy, reverse engineer or otherwise attempt to determine the structure or sequence of the product.



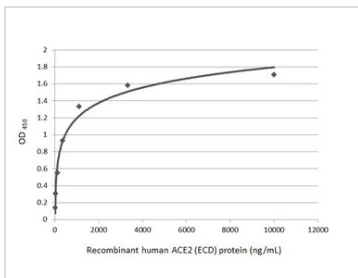
For full product information, images and publications, please visit our [website](#).

**DATA IMAGES**

**GTX01554-pro ELISA Image**

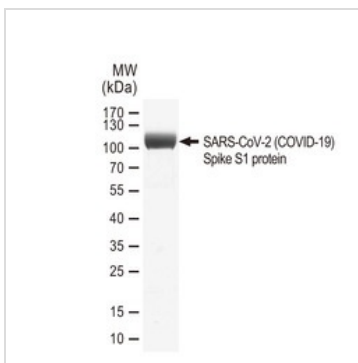
Inhibition analysis of immobilized recombinant SARS-CoV-2 (COVID-19) Spike S1 protein, His tag (active) (GTX01554-pro) (coated at 2 µg/mL) binding to soluble recombinant Human ACE2 (ECD) protein, mouse IgG Fc tag (GTX135683-pro) (1000 ng/mL). ACE2 binding was inhibited by increasing concentrations of SARS-CoV-2 (COVID-19) Spike RBD antibody (GTX135709) (14-10000 ng/mL). Bound ACE2 protein was detected by Goat Anti-Mouse IgG antibody (HRP) (GTX213111-01) (1:10000).


**GTX01554-pro ELISA Image**

Indirect ELISA analysis performed by coating plate with recombinant SARS-CoV-2 (COVID-19) Spike S1 protein, His tag (active) protein (GTX01554-pro) (4000-62.5 ng/mL). Coated protein probed with SARS-CoV-2 (COVID-19) Spike S1 antibody (GTX135384) (1 µg/mL). Rabbit IgG antibody (HRP) (GTX213110-01) (1:10000) detected bound primary antibody.


**GTX01554-pro Functional Assay Image**

Functional ELISA analysis of immobilized recombinant SARS-CoV-2 (COVID-19) Spike S1 protein, His tag (active) (GTX01554-pro) (coated at 2 µg/mL) binding to soluble recombinant Human ACE2 (ECD) protein, mouse IgG Fc tag (GTX135683-pro) (14-10000 ng/mL). Bound protein was detected by Goat Anti-Mouse IgG antibody (HRP) (GTX213111-01) (1:10000).


**GTX01554-pro Image**

SDS-PAGE of GTX01554-pro SARS-CoV-2 (COVID-19) Spike S1 protein, His tag (active).



For full product information, images and publications, please visit our [website](https://www.genetex.com).