

# SARS-CoV-2 (COVID-19) Spike S2 (ECD) protein, human IgG Fc tag

**Cat. No. GTX01559-pro**

<b>Applications</b>	ELISA
<b>Species</b>	SARS Coronavirus 2

**Package**  
100 µg

## Properties

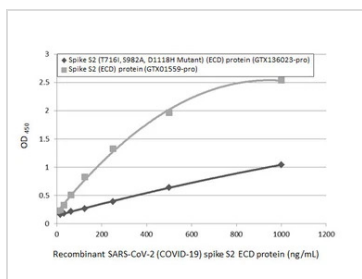
<b>Form</b>	Liquid
<b>Buffer</b>	Filter-sterilized PBS
<b>Preservative</b>	No preservatives
<b>Storage</b>	Store as concentrated solution. Aliquot and store at -20°C or below. Avoid freeze-thaw cycles.
<b>Concentration</b>	Batch dependent (Please refer to the vial label for the specific concentration.)
<b>Region/Sequence</b>	Ser686-Gln1208 of SARS-CoV-2 (COVID-19) Spike S2 protein (Accession #QHD43416.1) fused with a Fc tag at the C-terminus.
<b>Expression System</b>	HEK293 cells
<b>Purification</b>	Purified by affinity chromatography
<b>Purity</b>	> 95% by SDS-PAGE
<b>Conjugation</b>	Unconjugated

## Note

For laboratory research use only. Not for any clinical, therapeutic, or diagnostic use in humans or animals. Not for animal or human consumption.

Purchasers shall not, and agree not to enable third parties to, analyze, copy, reverse engineer or otherwise attempt to determine the structure or sequence of the product.

## DATA IMAGES

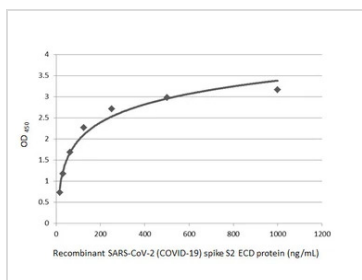


## GTX01559-pro ELISA Image

Sandwich ELISA detection of recombinant SARS-CoV-2 (COVID-19) Spike S2 (T716I, S982A, D1118H Mutant) (ECD) protein, His tag (GTX136023-pro) and SARS-CoV-2 (COVID-19) Spike S2 (ECD) protein, human IgG Fc tag (GTX01559-pro) using SARS-CoV / SARS-CoV-2 (COVID-19) spike antibody [1A9] (GTX632604) as capture antibody at concentration of 5 µg/mL and SARS-CoV-2 (COVID-19) Spike S2 antibody [HL1039] (GTX635911) as detection antibody at concentration of 1 µg/mL. Rabbit IgG antibody (HRP) (GTX213110-01) was diluted at 1:10000 and used to detect the primary antibody.

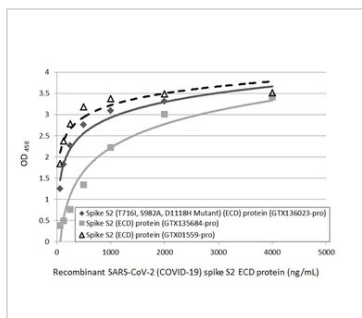


For full product information, images and publications, please visit our [website](https://www.genetex.com).



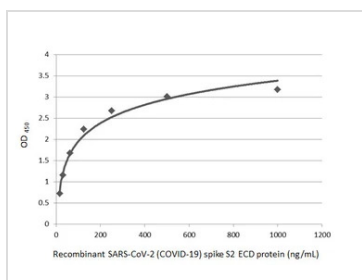
#### GTx01559-pro ELISA Image

Sandwich ELISA detection of recombinant SARS-CoV-2 (COVID-19) Spike S2 (ECD) protein, human IgG Fc tag (GTx01559-pro) using SARS-CoV-2 (COVID-19) Spike S2 antibody [GT745] (GTx636037) as capture antibody at concentration of 5 µg/mL and SARS-CoV-2 (COVID-19) Spike S2 antibody [HL1038] (GTx635910) as detection antibody at concentration of 1 µg/mL. Rabbit IgG antibody (HRP) (GTx213110-01) was diluted at 1:10000 and used to detect the primary antibody.



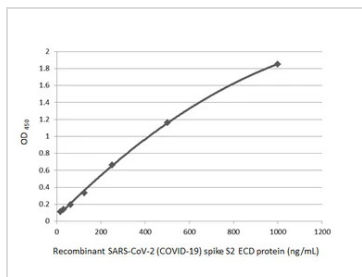
#### GTx01559-pro ELISA Image

Sandwich ELISA detection of recombinant SARS-CoV-2 (COVID-19) Spike S2 (T716L, S982A, D1118H Mutant) (ECD) protein, His tag (GTx136023-pro), SARS-CoV-2 (COVID-19) Spike S2 (ECD) protein, mouse IgG Fc tag (GTx135684-pro), and SARS-CoV-2 (COVID-19) Spike S2 (ECD) protein, human IgG Fc tag (GTx01559-pro) using SARS-CoV / SARS-CoV-2 (COVID-19) spike antibody [1A9] (GTx632604) as capture antibody at concentration of 5 µg/mL and SARS-CoV-2 (COVID-19) Spike S2 antibody [HL1038] (GTx635910) as detection antibody at concentration of 1 µg/mL. Rabbit IgG antibody (HRP) (GTx213110-01) was diluted at 1:10000 and used to detect the primary antibody.



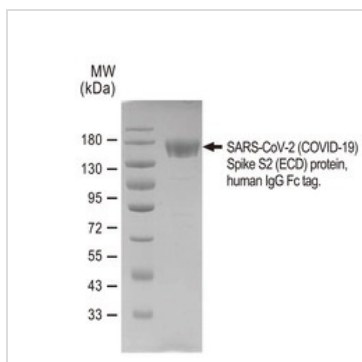
#### GTx01559-pro ELISA Image

Sandwich ELISA detection of recombinant SARS-CoV-2 (COVID-19) Spike S2 (ECD) protein, human IgG Fc tag (GTx01559-pro) using SARS-CoV-2 (COVID-19) Spike S2 antibody [GT8110] (GTx636038) as capture antibody at concentration of 5 µg/mL and SARS-CoV-2 (COVID-19) Spike S2 antibody [HL1038] (GTx635910) as detection antibody at concentration of 1 µg/mL. Rabbit IgG antibody (HRP) (GTx213110-01) was diluted at 1:10000 and used to detect the primary antibody.



#### GTx01559-pro ELISA Image

Sandwich ELISA detection of recombinant SARS-CoV-2 (COVID-19) Spike S2 (ECD) protein, human IgG Fc tag (GTx01559-pro) using SARS-CoV-2 (COVID-19) Spike S2 antibody [GT745] (GTx636037) as capture antibody at concentration of 5 µg/mL and SARS-CoV-2 (COVID-19) Spike S2 antibody [HL1039] (GTx635911) as detection antibody at concentration of 1 µg/mL. Rabbit IgG antibody (HRP) (GTx213110-01) was diluted at 1:10000 and used to detect the primary antibody.



#### GTx01559-pro Image

SDS-PAGE of GTx01559-pro SARS-CoV-2 (COVID-19) Spike S2 (ECD) protein, human IgG Fc tag.



For full product information, images and publications, please visit our [website](https://www.genetex.com).