

Tau (phospho Thr231) antibody

Cat. No. GTX01563

Host	Rabbit
Clonality	Polyclonal
Isotype	IgG
Applications	WB
Reactivity	Human, Mouse, Rat

References (3)

Package

100 µl

Applications

Application Note

*Optimal dilutions/concentrations should be determined by the researcher.

Suggested dilution	Recommended dilution
WB	1:300-1:1000

Not tested in other applications.

Calculated MW 79 kDa. ([Note](#))

Properties

Form	Liquid
Buffer	1% BSA, 50% Glycerol
Preservative	0.09% Sodium azide
Storage	Store as concentrated solution. Centrifuge briefly prior to opening vial. For short-term storage (1-2 weeks), store at 4°C. For long-term storage, aliquot and store at -20°C or below. Avoid multiple freeze-thaw cycles.
Concentration	1 mg/ml (Please refer to the vial label for the specific concentration.)
Immunogen	KLH conjugated synthetic phosphopeptide derived from human Tau around the phosphorylation site of Thr231 [VR(p-T)PP]
Purification	Protein A purified
Conjugation	Unconjugated

Note

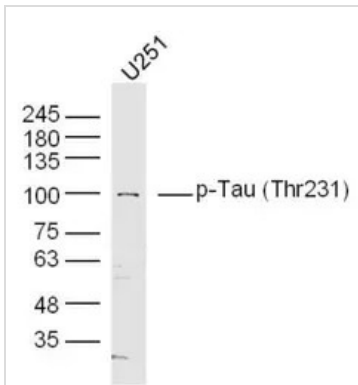
For laboratory research use only. Not for any clinical, therapeutic, or diagnostic use in humans or animals. Not for animal or human consumption.

Purchasers shall not, and agree not to enable third parties to, analyze, copy, reverse engineer or otherwise attempt to determine the structure or sequence of the product.



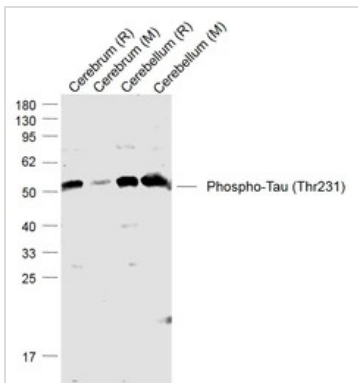
For full product information, images and publications, please visit our [website](#).

DATA IMAGES



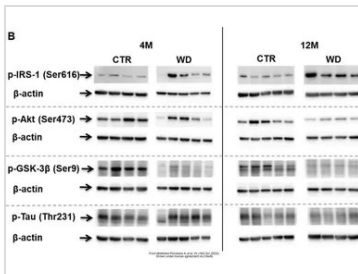
GTx01563 WB Image

WB analysis of U251 cell lysate using GTx01563 Tau (phospho Thr231) antibody.
Dilution : 1:300



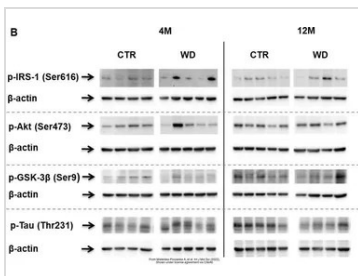
GTx01563 WB Image

WB analysis of various samples using GTx01563 Tau (phospho Thr231) antibody.
Lane 1 : Rat Cerebrum lysates
Lane 2 : Mouse Cerebrum lysates
Lane 3 : Rat Cerebellum lysates
Lane 4 : Mouse Cerebellum lysates
Dilution : 1:1000



GTx01563 WB Image

The data was published in the 2022 in Int J Mol Sci. [PMID: 35563135](https://pubmed.ncbi.nlm.nih.gov/35563135/)



GTx01563 WB Image

The data was published in the 2022 in Int J Mol Sci. [PMID: 35563135](https://pubmed.ncbi.nlm.nih.gov/35563135/)



For full product information, images and publications, please visit our [website](https://www.genetex.com).