

## Rabbit Anti-Human Ig light chain antibody [RM129]

Cat. No. GTX01571

Host	Rabbit
Clonality	Monoclonal
Isotype	IgG
Application	ICC/IF, FACS, ELISA, IHC
Reactivity	Human

Package  
100 µg

## APPLICATION

## Application Note

\*Optimal dilutions/concentrations should be determined by the researcher.

Suggested dilution	Recommended dilution
ICC/IF	0.5-2 µg/ml
FACS	Assay dependent
ELISA	0.1-0.5 µg/ml
IHC	0.5-2 µg/ml

Not tested in other applications.

## Product Note

RM129 reacts to both kappa and lambda light chain of human immunoglobulins.  
We do not recommend use of this product for Mouse,Rat,Goat,Monkey samples.

## PROPERTIES

Form	Liquid
Buffer	PBS, 1% BSA, 50% Glycerol
Preservative	0.09% Sodium azide
Storage	Store as concentrated solution. Centrifuge briefly prior to opening vial. For short-term storage (1-2 weeks), store at 4°C. For long-term storage, aliquot and store at -20°C or below. Avoid multiple freeze-thaw cycles.
Concentration	1 mg/ml (Please refer to the vial label for the specific concentration.)
Immunogen	Human IgG
Purification	Protein A purified From tissue culture supernatant
Conjugation	Unconjugated



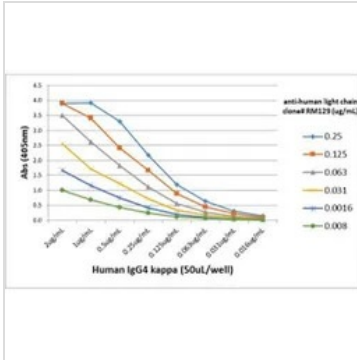
For full product information, images and publications, please visit our [website](#).

For laboratory research use only. Not for any clinical, therapeutic, or diagnostic use in humans or animals. Not for animal or human consumption.

#### Note

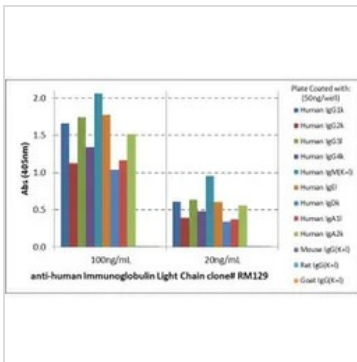
Purchasers shall not, and agree not to enable third parties to, analyze, copy, reverse engineer or otherwise attempt to determine the structure or sequence of the product.

#### DATA IMAGES



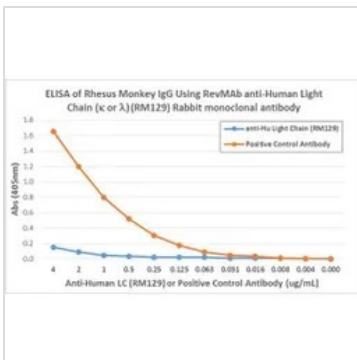
#### GTX01571 ELISA Image

ELISA analysis of different amounts of human IgG4k using serial dilution of GTX01571 Human Ig Light chain antibody [RM129].



#### GTX01571 ELISA Image

ELISA analysis of human immunoglobulins using GTX01571 Human Ig Light Chains antibody [RM129]. This antibody does not react to mouse IgG, rat IgG, or goat IgG.



#### GTX01571 ELISA Image

ELISA analysis of monkey IgG using GTX01571 Human Ig Light Chains antibody [RM129]. A serial dilution of RM129 and a monkey IgG binding antibody (positive control) was used as the detection antibody.



For full product information, images and publications, please visit our [website](https://www.genetex.com).