

HSL (phospho Ser853) antibody

Cat. No. GTX01573

| | |
|-------------|------------------|
| Host | Rabbit |
| Clonality | Polyclonal |
| Isotype | IgG |
| Application | WB, IHC-P, ELISA |
| Reactivity | Human, Mouse |

Package
100 µl

APPLICATION

Application Note

*Optimal dilutions/concentrations should be determined by the researcher.

| Suggested dilution | Recommended dilution |
|--------------------|----------------------|
| WB | 1:500-1:2000 |
| IHC-P | 1:50-1:200 |
| ELISA | Assay dependent |

Not tested in other applications.

Calculated MW 117 kDa. ([Note](#))

PROPERTIES

| | |
|---------------|----------------------------------------------------------------------------------------------------------------------------------------------------------------------------------------------------------------------------|
| Form | Liquid |
| Buffer | PBS, 150mM NaCl, 50% Glycerol |
| Preservative | 0.02% Sodium azide |
| Storage | Store as concentrated solution. Centrifuge briefly prior to opening vial. For short-term storage (1-2 weeks), store at 4°C. For long-term storage, aliquot and store at -20°C or below. Avoid multiple freeze-thaw cycles. |
| Concentration | 1 mg/ml (Please refer to the vial label for the specific concentration.) |
| Immunogen | A synthesized peptide derived from human HSL around the phosphorylation site of Ser853. |
| Purification | Purified by sequential chromatography on phospho-peptide and non-phospho-peptide affinity columns. From serum |
| Conjugation | Unconjugated |

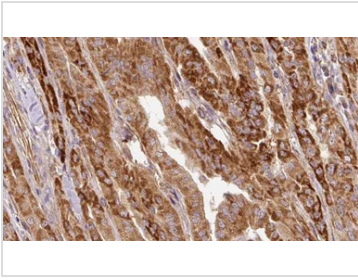
Note

For laboratory research use only. Not for any clinical, therapeutic, or diagnostic use in humans or animals. Not for animal or human consumption.

Purchasers shall not, and agree not to enable third parties to, analyze, copy, reverse engineer or otherwise attempt to determine the structure or sequence of the product.



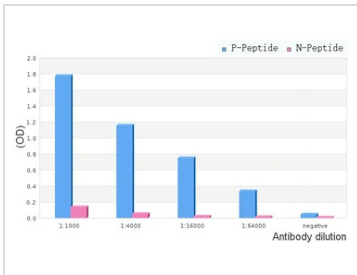
For full product information, images and publications, please visit our [website](#).

DATA IMAGES

GTx01573 IHC-P Image

IHC-P analysis of human thyroid cancer tissue using GTx01573 HSL (phospho Ser853) antibody.

Antigen retrieval : Heat mediated antigen retrieval step in citrate buffer

Dilution : 1:100

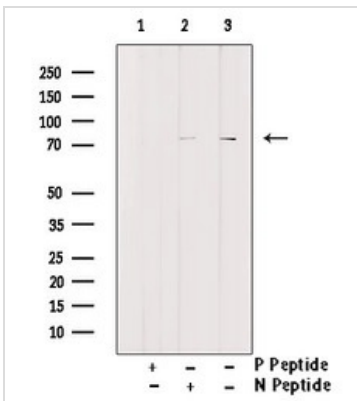

GTx01573 ELISA Image

ELISA analysis of phospho- and non phospho- immunogen peptide using GTx01573 HSL (phospho Ser853) antibody.

P-peptide : phospho-peptide

N-peptide : non-phospho-peptide

Peptides concentration : 1µg/ml


GTx01573 WB Image

WB analysis of 3T3-L1 cell treated with isoproterenol lysate using GTx01573 HSL (phospho Ser853) antibody.

Lane 1 : Primary antibody pre-treated with phospho-blocking peptide

Lane2 : Primary antibody pre-treated with non-phospho-blocking peptide

Lane 3 : untreated sample



For full product information, images and publications, please visit our [website](https://www.genetex.com).