

## HSL (phospho Ser853) antibody

Cat. No. GTX01573

Host	Rabbit
Clonality	Polyclonal
Isotype	IgG
Applications	WB, IHC-P, ELISA
Reactivity	Human, Mouse

Package  
100 µl

## Applications

## Application Note

\*Optimal dilutions/concentrations should be determined by the researcher.

Suggested dilution	Recommended dilution
WB	1:500-1:2000
IHC-P	1:50-1:200
ELISA	Assay dependent

Not tested in other applications.

Calculated MW 117 kDa. ([Note](#))

## Properties

Form	Liquid
Buffer	PBS, 150mM NaCl, 50% Glycerol
Preservative	0.02% Sodium azide
Storage	Store as concentrated solution. Centrifuge briefly prior to opening vial. For short-term storage (1-2 weeks), store at 4°C. For long-term storage, aliquot and store at -20°C or below. Avoid multiple freeze-thaw cycles.
Concentration	1 mg/ml (Please refer to the vial label for the specific concentration.)
Immunogen	A synthesized peptide derived from human HSL around the phosphorylation site of Ser853.
Purification	Purified by sequential chromatography on phospho-peptide and non-phospho-peptide affinity columns. From serum
Conjugation	Unconjugated

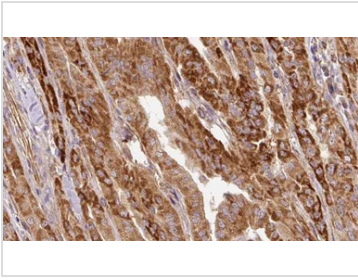
## Note

For laboratory research use only. Not for any clinical, therapeutic, or diagnostic use in humans or animals. Not for animal or human consumption.

Purchasers shall not, and agree not to enable third parties to, analyze, copy, reverse engineer or otherwise attempt to determine the structure or sequence of the product.



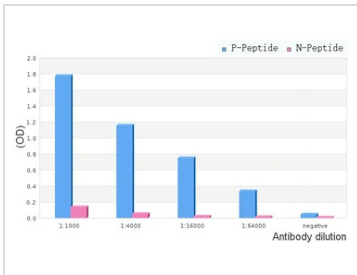
For full product information, images and publications, please visit our [website](#).

**DATA IMAGES**

**GTx01573 IHC-P Image**

IHC-P analysis of human thyroid cancer tissue using GTx01573 HSL (phospho Ser853) antibody.

Antigen retrieval : Heat mediated antigen retrieval step in citrate buffer

Dilution : 1:100

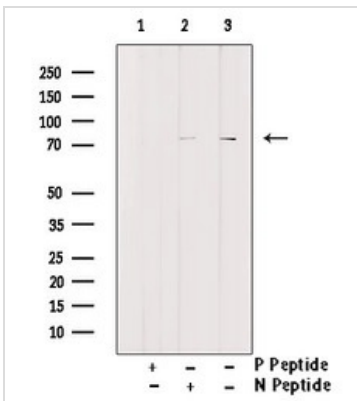

**GTx01573 ELISA Image**

ELISA analysis of phospho- and non phospho- immunogen peptide using GTx01573 HSL (phospho Ser853) antibody.

P-peptide : phospho-peptide

N-peptide : non-phospho-peptide

Peptides concentration : 1µg/ml


**GTx01573 WB Image**

WB analysis of 3T3-L1 cell treated with isoproterenol lysate using GTx01573 HSL (phospho Ser853) antibody.

Lane 1 : Primary antibody pre-treated with phospho-blocking peptide

Lane2 : Primary antibody pre-treated with non-phospho-blocking peptide

Lane 3 : untreated sample



For full product information, images and publications, please visit our [website](https://www.genetex.com).