

CD33 antibody [PWS44]

Cat. No. GTX01852

Host	Mouse
Clonality	Monoclonal
Isotype	IgG2b
Applications	WB, IHC-P
Reactivity	Human, Mouse

References (6)

Package

500 µl

Applications

Application Note

*Optimal dilutions/concentrations should be determined by the researcher.

Suggested dilution	Recommended dilution
WB	Assay dependent
IHC-P	1:100

Note : Heat Induced Epitope Retrieval (HIER) was performed in Epitope Retrieval Solution pH 9.

Not tested in other applications.

Calculated MW 40 kDa. ([Note](#))

Product Note This antibody recognizes both isoforms; CD33m (31 kD) and CD33M (67 kD).

Properties

Form	Liquid
Buffer	Tissue culture supernatant
Preservative	0.09% Sodium azide
Storage	Store as concentrated solution. Centrifuge briefly prior to opening vial. Store at 4°C. DO NOT FREEZE.
Immunogen	Prokaryotic recombinant protein corresponding to a region of the C2 domain of the human CD33 molecule.
Purification	Unpurified
Conjugation	Unconjugated

Note

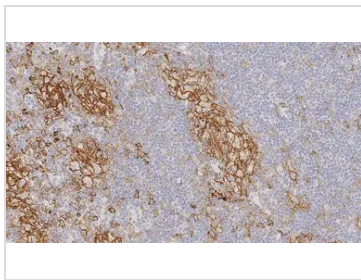
For laboratory research use only. Not for any clinical, therapeutic, or diagnostic use in humans or animals. Not for animal or human consumption.

Purchasers shall not, and agree not to enable third parties to, analyze, copy, reverse engineer or otherwise attempt to determine the structure or sequence of the product.



For full product information, images and publications, please visit our [website](#).

DATA IMAGES



GTx01852 IHC-P Image

IHC-P analysis of human lymph node, anaplastic lymphoma tissue using GTx01852 CD33 antibody [PWS44]. Note membrane staining of neoplastic cells.



For full product information, images and publications, please visit our [website](#).