

## Mouse Anti-Human IgD antibody [DRN1C]

Cat. No. GTX01853

Host	Mouse
Clonality	Monoclonal
Isotype	IgG1
Applications	WB, IHC-P
Reactivity	Human

Package  
500 µl

## Applications

## Application Note

\*Optimal dilutions/concentrations should be determined by the researcher.

Suggested dilution	Recommended dilution
WB	1:25–1:100
IHC-P	1:1000

**Note : Heat induced epitope retrieval technique using Tris/EDTA-based buffer, pH 9.0. Polymer detection recommended.**

Not tested in other applications.

**Product Note** This antibody recognizes Delta chain of human Immunoglobulin D.

## Properties

Form	Liquid
Buffer	Tissue culture supernatant
Preservative	0.09% Sodium azide
Storage	Store as concentrated solution. Centrifuge briefly prior to opening vial. Store at 4°C.
Immunogen	Prokaryotic recombinant protein corresponding to 222 amino acids of the N terminus of the Delta heavy chain constant region.
Purification	Unpurified
Conjugation	Unconjugated

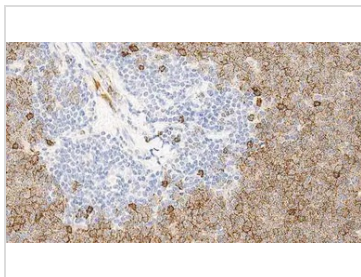
## Note

For laboratory research use only. Not for any clinical, therapeutic, or diagnostic use in humans or animals. Not for animal or human consumption.

Purchasers shall not, and agree not to enable third parties to, analyze, copy, reverse engineer or otherwise attempt to determine the structure or sequence of the product.



For full product information, images and publications, please visit our [website](#).

**DATA IMAGES**

**GTX01853 IHC-P Image**

IHC-P analysis of mantle cell lymphoma tissue using GTX01853 Human IgD antibody [DRN1C]. Note the mantle cell tumor cells show moderate staining for Immunoglobulin D, with a stronger reaction seen in plasma cells.



For full product information, images and publications, please visit our [website](#).