

Mouse Anti-Human IgA antibody [N1CLA]

Cat. No. GTX01857

Host	Mouse
Clonality	Monoclonal
Isotype	IgG1
Applications	WB, IHC-P
Reactivity	Human

Package
500 µl

Applications

Application Note

*Optimal dilutions/concentrations should be determined by the researcher.

Suggested dilution	Recommended dilution
WB	Assay dependent
IHC-P	1:300

Note : The recommended fixative is 10% neutral-buffered formalin for paraffin-embedded tissue sections. Heat Induced Epitope Retrieval (HIER) was performed in Epitope Retrieval Solution pH6.

Not tested in other applications.

Product Note This antibody recognizes alpha chain of human immunoglobulin A.

Properties

Form	Liquid
Buffer	Tissue culture supernatant
Preservative	0.09% Sodium azide
Storage	Store as concentrated solution. Centrifuge briefly prior to opening vial. Store at 4°C. DO NOT FREEZE.
Immunogen	Prokaryotic recombinant protein corresponding to 129 amino acids of the heavy chain constant region of the human immunoglobulin A molecule.
Purification	Unpurified
Conjugation	Unconjugated

Note

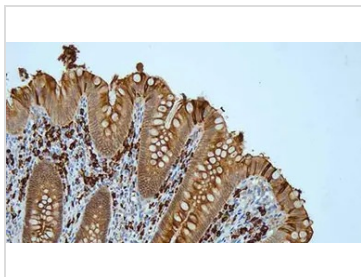
For laboratory research use only. Not for any clinical, therapeutic, or diagnostic use in humans or animals. Not for animal or human consumption.

Purchasers shall not, and agree not to enable third parties to, analyze, copy, reverse engineer or otherwise attempt to determine the structure or sequence of the product.



For full product information, images and publications, please visit our [website](#).

DATA IMAGES



GTx01857 IHC-P Image

IHC-P analysis of human appendix tissue using GTx01857 Human IgA antibody [N1CLA]. Note the intense staining of plasma cells and secreted Immunoglobulin A: clone N1CLA



For full product information, images and publications, please visit our [website](#).