

p21 Cip1 antibody [4D10]

Cat. No. GTX01859

Host	Mouse
Clonality	Monoclonal
Isotype	IgG1
Application	IHC-P
Reactivity	Human

Package
500 µl

APPLICATION

Application Note

*Optimal dilutions/concentrations should be determined by the researcher.

Suggested dilution	Recommended dilution
IHC-P	1:20–1:40

Note : High temperature antigen unmasking technique. Standard ABC technique.

Not tested in other applications.

Calculated MW 18 kDa. ([Note](#))

PROPERTIES

Form	Liquid
Buffer	Tissue culture supernatant
Preservative	0.09% Sodium azide
Storage	Store as concentrated solution. Centrifuge briefly prior to opening vial. Store at 4°C.
Immunogen	Prokaryotic recombinant fusion protein corresponding to the full length WAF1 molecule.
Purification	Unpurified
Conjugation	Unconjugated

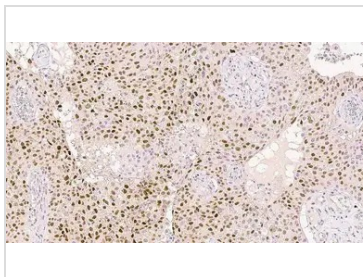
Note

For laboratory research use only. Not for any clinical, therapeutic, or diagnostic use in humans or animals. Not for animal or human consumption.

Purchasers shall not, and agree not to enable third parties to, analyze, copy, reverse engineer or otherwise attempt to determine the structure or sequence of the product.



For full product information, images and publications, please visit our [website](#).

DATA IMAGES

GTX01859 IHC-P Image

IHC-P analysis of squamous cell carcinoma tissue using GTX01859 p21 Cip1 antibody [4D10].



For full product information, images and publications, please visit our [website](#).