

CD30 antibody [JCM182]

Cat. No. GTX01872

Host	Mouse
Clonality	Monoclonal
Isotype	IgG1
Applications	IHC-P
Reactivity	Human

References (1)

Package

500 µl

Applications

Application Note

*Optimal dilutions/concentrations should be determined by the researcher.

Suggested dilution	Recommended dilution
IHC-P	1:100

Note : Heat Induced Epitope Retrieval (HIER) was performed in Citrate-based buffer, pH 6.0. Polymer detection recommended. Using retrieval solutions other than that recommended may increase background reactivity.

Not tested in other applications.

Properties

Form	Liquid
Buffer	Tissue culture supernatant
Preservative	0.09% Sodium azide
Storage	Store as concentrated solution. Centrifuge briefly prior to opening vial. Store at 4°C.
Immunogen	Prokaryotic recombinant protein corresponding to the internal domain of the protein of the human CD30 molecule.
Purification	Unpurified
Conjugation	Unconjugated

Note

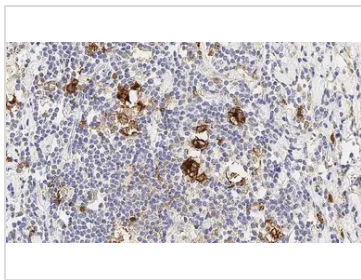
For laboratory research use only. Not for any clinical, therapeutic, or diagnostic use in humans or animals. Not for animal or human consumption.

Purchasers shall not, and agree not to enable third parties to, analyze, copy, reverse engineer or otherwise attempt to determine the structure or sequence of the product.



For full product information, images and publications, please visit our [website](#).

DATA IMAGES



GTx01872 IHC-P Image

IHC-P analysis of human lymph node, nodular sclerosing hodgkin's disease tissue using GTx01872 CD30 antibody [JCM182]. Note membrane and cytoplasmic staining of the neoplastic cells, CD30: clone JCM182



For full product information, images and publications, please visit our [website](#).