

# Parathyroid Hormone antibody [105G7]

**Cat. No. GTX01891**

<b>Host</b>	Mouse
<b>Clonality</b>	Monoclonal
<b>Isotype</b>	IgG2a
<b>Application</b>	IHC-P
<b>Reactivity</b>	Human

**Package**  
500 µl

## APPLICATION

### Application Note

\*Optimal dilutions/concentrations should be determined by the researcher.

Suggested dilution	Recommended dilution
IHC-P	1:300
<b>Note : The recommended fixative is 10% neutral-buffered formalin for paraffin-embedded tissue sections. Heat Induced Epitope Retrieval (HIER) was performed in Epitope Retrieval Solution pH6.</b>	

Not tested in other applications.

**Calculated MW** 13 kDa. ( [Note](#) )

## PROPERTIES

<b>Form</b>	Liquid
<b>Buffer</b>	Tissue culture supernatant
<b>Preservative</b>	0.09% Sodium azide
<b>Storage</b>	Store as concentrated solution. Centrifuge briefly prior to opening vial. Store at 4°C. DO NOT FREEZE.
<b>Immunogen</b>	Prokaryotic recombinant protein corresponding to the entire human parathyroid hormone molecule.
<b>Purification</b>	Unpurified
<b>Conjugation</b>	Unconjugated

### Note

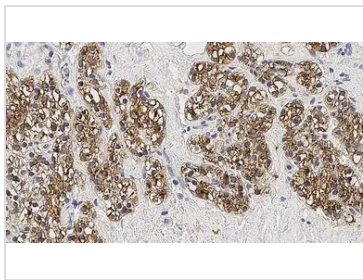
For laboratory research use only. Not for any clinical, therapeutic, or diagnostic use in humans or animals. Not for animal or human consumption.

Purchasers shall not, and agree not to enable third parties to, analyze, copy, reverse engineer or otherwise attempt to determine the structure or sequence of the product.



For full product information, images and publications, please visit our [website](#).

## DATA IMAGES



### GTx01891 IHC-P Image

IHC-P analysis of human parathyroid adenoma tissue using GTx01891 Parathyroid Hormone antibody [105G7]. Note membrane/cytoplasmic staining of tumor cells.



For full product information, images and publications, please visit our [website](#).