

Laminin alpha 2 antibody [Mer3/22B2]

Cat. No. GTX01902

Host	Mouse
Clonality	Monoclonal
Isotype	IgG1
Applications	IHC-Fr
Reactivity	Human, Rabbit

Package
500 µl

Applications

Application Note

*Optimal dilutions/concentrations should be determined by the researcher.

Suggested dilution	Recommended dilution
IHC-Fr	1:50–1:100

Note : Freeze specimen tissue blocks in isopentane chilled in liquid nitrogen.

Not tested in other applications.

Product Note

We do not recommend use of this product for Mouse,Rat,Dog,Hamster,Chicken,Pig samples.

Properties

Form	Liquid
Buffer	Tissue culture supernatant
Preservative	0.09% Sodium azide
Storage	Store as concentrated solution. Centrifuge briefly prior to opening vial. For short-term storage (1-2 weeks), store at 4°C. For long-term storage, aliquot and store at -20°C or below. Avoid multiple freeze-thaw cycles.
Immunogen	Purified protein from placenta.
Purification	Unpurified
Conjugation	Unconjugated

Note

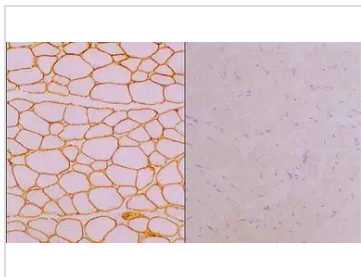
For laboratory research use only. Not for any clinical, therapeutic, or diagnostic use in humans or animals. Not for animal or human consumption.

Purchasers shall not, and agree not to enable third parties to, analyze, copy, reverse engineer or otherwise attempt to determine the structure or sequence of the product.



For full product information, images and publications, please visit our [website](#).

DATA IMAGES



GTX01902 IHC-Fr Image

IHC-Fr analysis of human skeletal muscle tissue using GTX01902 Laminin alpha 2 antibody [Mer3/22B2]. Note membrane staining of normal muscle fibers (Left) and absence of staining of muscle fibers (Right).



For full product information, images and publications, please visit our [website](#).