

MITF antibody [34CA5]

Cat. No. GTX01904

Host	Mouse
Clonality	Monoclonal
Isotype	IgG1
Applications	IHC-P, IHC-Fr
Reactivity	Human

Package
500 µl

Applications

Application Note

*Optimal dilutions/concentrations should be determined by the researcher.

Suggested dilution	Recommended dilution
IHC-P	1:10–1:20
IHC-Fr	Assay dependent

Note : High temperature antigen unmasking technique using 1 mM EDTA (pH 8.0). Standard ABC technique. Acetone fixation recommended

Not tested in other applications.

Product Note This antibody recognizes human microphthalmia transcription factor, MITF-M isoform.

Properties

Form	Liquid
Buffer	Tissue culture supernatant
Preservative	0.09% Sodium azide
Storage	Store as concentrated solution. Centrifuge briefly prior to opening vial. Store at 4°C.
Immunogen	Prokaryotic recombinant protein corresponding to 111 amino acids of the N-terminal region of the MITF-M molecule.
Purification	Unpurified
Conjugation	Unconjugated

Note

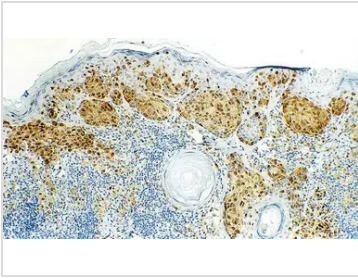
For laboratory research use only. Not for any clinical, therapeutic, or diagnostic use in humans or animals. Not for animal or human consumption.

Purchasers shall not, and agree not to enable third parties to, analyze, copy, reverse engineer or otherwise attempt to determine the structure or sequence of the product.



For full product information, images and publications, please visit our [website](#).

DATA IMAGES

**GTX01904 IHC-P Image**

IHC-P analysis of human malignant melanoma tissue using GTX01904 MITF antibody [34CA5]. Note nuclear staining of melanoma cells.



For full product information, images and publications, please visit our [website](#).