

Ki67 antibody [MM1]

Cat. No. GTX01905

Host	Mouse
Clonality	Monoclonal
Isotype	IgG1
Applications	IHC-P, IHC-Fr
Reactivity	Human

Package
500 µl

Applications

Application Note

*Optimal dilutions/concentrations should be determined by the researcher.

Suggested dilution	Recommended dilution
IHC-P	1:200
IHC-Fr	Assay dependent

Note : Heat Induced Epitope Retrieval (HIER) was performed in Retrieval Solution pH 6 Optimum fixative, Zamboni's, 10 minutes at 25 °C (see Stefanini et al., 1967).

Not tested in other applications.

Properties

Form	Liquid
Buffer	Tissue culture supernatant
Preservative	0.09% Sodium azide
Storage	Store as concentrated solution. Centrifuge briefly prior to opening vial. Store at 4°C.
Immunogen	Prokaryotic recombinant fusion protein corresponding to a 1086 bp Ki67 motif-containing cDNA fragment.
Purification	Unpurified
Conjugation	Unconjugated

Note

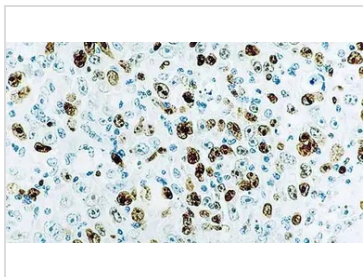
For laboratory research use only. Not for any clinical, therapeutic, or diagnostic use in humans or animals. Not for animal or human consumption.

Purchasers shall not, and agree not to enable third parties to, analyze, copy, reverse engineer or otherwise attempt to determine the structure or sequence of the product.



For full product information, images and publications, please visit our [website](#).

DATA IMAGES



GTx01905 IHC-P Image

IHC-P analysis of diffuse large B cell lymphoma tissue using GTx01905 Ki67 antibody [MM1]. Note the intense nuclear staining in proliferating B cells.



For full product information, images and publications, please visit our [website](#).