

Geminin antibody [EM6]

Cat. No. GTX01909

Host	Mouse
Clonality	Monoclonal
Isotype	IgG2a
Applications	WB, IHC-P
Reactivity	Human

 Review (1)

 Package
500 µl

Applications

Application Note

*Optimal dilutions/concentrations should be determined by the researcher.

Suggested dilution	Recommended dilution
WB	Assay dependent
IHC-P	1:40

Note : The recommended fixative is 10% neutral-buffered formalin for paraffin-embedded tissue sections.

Not tested in other applications.

Calculated MW 24 kDa. ([Note](#))

Properties

Form	Liquid
Buffer	Tissue culture supernatant
Preservative	0.09% Sodium azide
Storage	Store as concentrated solution. Centrifuge briefly prior to opening vial. Store at 4°C. DO NOT FREEZE.
Immunogen	A prokaryotic recombinant protein containing amino acids 5–209 of the mature protein.
Purification	Unpurified
Conjugation	Unconjugated

Note

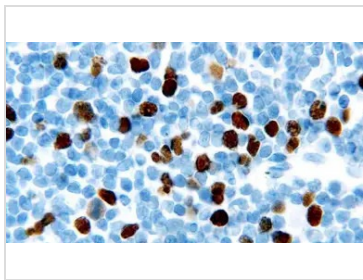
For laboratory research use only. Not for any clinical, therapeutic, or diagnostic use in humans or animals. Not for animal or human consumption.

Purchasers shall not, and agree not to enable third parties to, analyze, copy, reverse engineer or otherwise attempt to determine the structure or sequence of the product.



For full product information, images and publications, please visit our [website](#).

DATA IMAGES



GTx01909 IHC-P Image

IHC-P analysis of human chronic lymphocytic leukemia tissue using GTx01909 Geminin antibody [EM6].
Note intense nuclear staining of proliferating neoplastic cells.



For full product information, images and publications, please visit our [website](#).