

# PAX5 antibody [1EW]

**Cat. No. GTX01923**

<b>Host</b>	Mouse
<b>Clonality</b>	Monoclonal
<b>Isotype</b>	IgG1
<b>Applications</b>	IHC-P
<b>Reactivity</b>	Human

**Package**  
500 µl

## Applications

### Application Note

\*Optimal dilutions/concentrations should be determined by the researcher.

Suggested dilution	Recommended dilution
IHC-P	1:100

**Note : Heat Induced Epitope Retrieval (HIER) was performed in Epitope Retrieval Solution pH6.**

Not tested in other applications.

## Properties

<b>Form</b>	Liquid
<b>Buffer</b>	Tissue culture supernatant
<b>Preservative</b>	0.09% Sodium azide
<b>Storage</b>	Store as concentrated solution. Centrifuge briefly prior to opening vial. Store at 4°C. DO NOT FREEZE.
<b>Immunogen</b>	Recombinant protein corresponding to part of the C-terminus of the human Pax-5 molecule.
<b>Purification</b>	Unpurified
<b>Conjugation</b>	Unconjugated

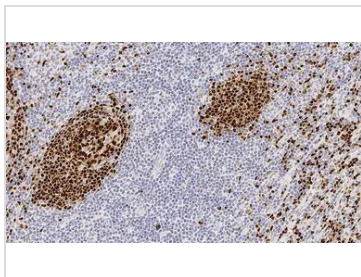
### Note

For laboratory research use only. Not for any clinical, therapeutic, or diagnostic use in humans or animals. Not for animal or human consumption.

Purchasers shall not, and agree not to enable third parties to, analyze, copy, reverse engineer or otherwise attempt to determine the structure or sequence of the product.



For full product information, images and publications, please visit our [website](#).

**DATA IMAGES**

**GTX01923 IHC-P Image**

IHC-P analysis of human tonsil tissue using GTX01923 PAX5 antibody [1EW]. Note nuclear staining of B cells.



For full product information, images and publications, please visit our [website](#).