

Progesterone Receptor antibody [16]

Cat. No. GTX01926

Host	Mouse
Clonality	Monoclonal
Isotype	IgG1
Applications	IHC-P
Reactivity	Human

Package
500 µl

Applications

Application Note

*Optimal dilutions/concentrations should be determined by the researcher.

Suggested dilution	Recommended dilution
IHC-P	1:100–1:200
Note : The recommended fixative is 10% neutral-buffered formalin for paraffin-embedded tissue sections. High temperature antigen retrieval using 0.01 M citrate retrieval solution (pH 6.0) is recommended.	

Not tested in other applications.

Product Note

This antibody reacts with both A and B forms of human progesterone receptor in Western blotting procedures, but only the A form is detected in immunohistochemical procedures.

Properties

Form	Liquid
Buffer	Tissue culture supernatant
Preservative	0.09% Sodium azide
Storage	Store as concentrated solution. Centrifuge briefly prior to opening vial. Store at 4°C. DO NOT FREEZE.
Immunogen	Prokaryotic recombinant protein, corresponding to the N-terminal region of the A form of human progesterone receptor.
Purification	Unpurified
Conjugation	Unconjugated

Note

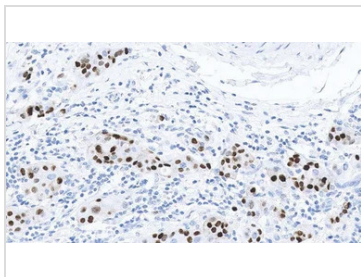
For laboratory research use only. Not for any clinical, therapeutic, or diagnostic use in humans or animals. Not for animal or human consumption.

Purchasers shall not, and agree not to enable third parties to, analyze, copy, reverse engineer or otherwise attempt to determine the structure or sequence of the product.



For full product information, images and publications, please visit our [website](#).

DATA IMAGES



GTx01926 IHC-P Image

IHC-P analysis of breast carcinoma tissue using GTx01926 Progesterone Receptor antibody [16]. Note the nuclear staining in a proportion of tumor cells.



For full product information, images and publications, please visit our [website](#).