

TMEM16A antibody [K9]

Cat. No. GTX01933

Host	Mouse
Clonality	Monoclonal
Isotype	IgG2b
Applications	IHC-P
Reactivity	Human

Package
500 µl

Applications

Application Note

*Optimal dilutions/concentrations should be determined by the researcher.

Suggested dilution	Recommended dilution
IHC-P	1:100

Note : Heat Induced Epitope Retrieval (HIER) was performed in Citrate-based buffer, pH 6.0. Polymer detection recommended. The use of PBS-based diluents may result in increased background staining.

Not tested in other applications.

Properties

Form	Liquid
Buffer	Tissue culture supernatant
Preservative	0.09% Sodium azide
Storage	Store as concentrated solution. Centrifuge briefly prior to opening vial. Store at 4°C.
Immunogen	Prokaryotic recombinant protein corresponding to part of the C-terminus of the cytoplasmic domain.
Purification	Unpurified
Conjugation	Unconjugated

Note

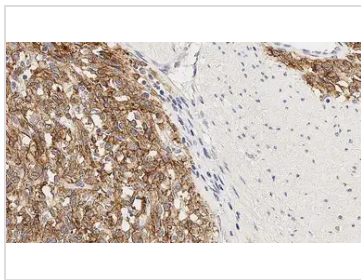
For laboratory research use only. Not for any clinical, therapeutic, or diagnostic use in humans or animals. Not for animal or human consumption.

Purchasers shall not, and agree not to enable third parties to, analyze, copy, reverse engineer or otherwise attempt to determine the structure or sequence of the product.



For full product information, images and publications, please visit our [website](#).

DATA IMAGES



GTx01933 IHC-P Image

IHC-P analysis of human colon, gastrointestinal stromal tumor tissue using GTx01933 TMEM16A antibody [K9]. Note membrane staining of neoplastic cells.



For full product information, images and publications, please visit our [website](#).