

## Rb antibody [13A10]

Cat. No. GTX01934

<b>Host</b>	Mouse
<b>Clonality</b>	Monoclonal
<b>Isotype</b>	IgG1
<b>Applications</b>	WB, IHC-P, IHC-Fr
<b>Reactivity</b>	Human

References ( 5 )

Package

500 µl

## Applications

## Application Note

\*Optimal dilutions/concentrations should be determined by the researcher.

Suggested dilution	Recommended dilution
WB	1:25–1:50
IHC-P	1:25–1:50
IHC-Fr	Assay dependent

**Note : High temperature antigen unmasking technique. Standard ABC technique.**  
**Optimum fixative, Zamboni's 10 minutes at 25°C (see Stefanini et al., 1967).**

Not tested in other applications.

Calculated MW 106 kDa. ( [Note](#) )

## Properties

<b>Form</b>	Liquid
<b>Buffer</b>	Tissue culture supernatant
<b>Preservative</b>	0.09% Sodium azide
<b>Storage</b>	Store as concentrated solution. Centrifuge briefly prior to opening vial. Store at 4°C.
<b>Immunogen</b>	Recombinant prokaryotic protein corresponding to a portion of the N-terminal region of the retinoblastoma gene product.
<b>Purification</b>	Unpurified
<b>Conjugation</b>	Unconjugated

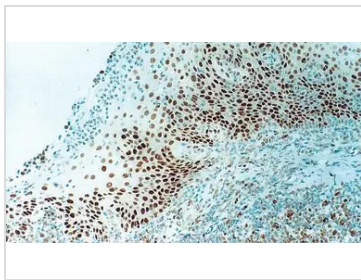
## Note

For laboratory research use only. Not for any clinical, therapeutic, or diagnostic use in humans or animals. Not for animal or human consumption.

Purchasers shall not, and agree not to enable third parties to, analyze, copy, reverse engineer or otherwise attempt to determine the structure or sequence of the product.



For full product information, images and publications, please visit our [website](#).

**DATA IMAGES**

**GTX01934 IHC-P Image**

IHC-P analysis of human tonsil tissue using GTX01934 Rb antibody [13A10]. Note intense nuclear staining of epithelial cells.



For full product information, images and publications, please visit our [website](#).