

alpha Synuclein antibody [KM51]

Cat. No. GTX01946

Host	Mouse
Clonality	Monoclonal
Isotype	IgG1
Applications	IHC-P
Reactivity	Human

Package
500 µl

Applications

Application Note

*Optimal dilutions/concentrations should be determined by the researcher.

Suggested dilution	Recommended dilution
IHC-P	1:20–1:40

Note : High temperature antigen unmasking technique using 1 mM EDTA (pH 8.0). Standard ABC technique.

Not tested in other applications.

Product Note Does not cross react with beta-synuclein.

Properties

Form	Liquid
Buffer	Tissue culture supernatant
Preservative	0.09% Sodium azide
Storage	Store as concentrated solution. Centrifuge briefly prior to opening vial. Store at 4°C.
Immunogen	Prokaryotic recombinant protein corresponding to the majority of the full length alpha-synuclein molecule.
Purification	Unpurified
Conjugation	Unconjugated

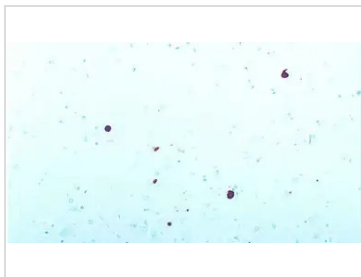
Note

For laboratory research use only. Not for any clinical, therapeutic, or diagnostic use in humans or animals. Not for animal or human consumption.

Purchasers shall not, and agree not to enable third parties to, analyze, copy, reverse engineer or otherwise attempt to determine the structure or sequence of the product.



For full product information, images and publications, please visit our [website](#).

DATA IMAGES

GTx01946 IHC-P Image

IHC-P analysis of human brain, Lewy body dementia using GTx01946 alpha Synuclein antibody [KM51].
Note staining of alpha-synuclein-containing Lewy bodies.



For full product information, images and publications, please visit our [website](#).