

Thrombomodulin antibody [15C8]

Cat. No. GTX01950

| | |
|--------------|------------|
| Host | Mouse |
| Clonality | Monoclonal |
| Isotype | IgG1 |
| Applications | IHC-P |
| Reactivity | Human |

Package
500 µl

Applications

Application Note

*Optimal dilutions/concentrations should be determined by the researcher.

| Suggested dilution | Recommended dilution |
|--------------------|----------------------|
| IHC-P | 1:100 |

Note : The recommended fixative is 10% neutral-buffered formalin for paraffin-embedded tissue sections. Heat Induced Epitope Retrieval (HIER) was performed in Epitope Retrieval Solution pH6.

Not tested in other applications.

Properties

| | |
|--------------|---|
| Form | Liquid |
| Buffer | Tissue culture supernatant |
| Preservative | 0.09% Sodium azide |
| Storage | Store as concentrated solution. Centrifuge briefly prior to opening vial. Store at 4°C. DO NOT FREEZE. |
| Immunogen | Prokaryotic recombinant protein corresponding to the epidermal growth factor homology domain of the human CD141 molecule. |
| Purification | Unpurified |
| Conjugation | Unconjugated |

Note

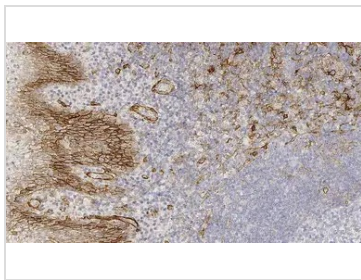
For laboratory research use only. Not for any clinical, therapeutic, or diagnostic use in humans or animals. Not for animal or human consumption.

Purchasers shall not, and agree not to enable third parties to, analyze, copy, reverse engineer or otherwise attempt to determine the structure or sequence of the product.



For full product information, images and publications, please visit our [website](#).

DATA IMAGES



GTX01950 IHC-P Image

IHC-P analysis of human tonsil using GTX01950 Thrombomodulin antibody [15C8]. Note membrane staining of the basal cells of the squamous mucosa, endothelium and a subset of dendritic cells.



For full product information, images and publications, please visit our [website](#).