

Wilms Tumor 1 antibody [WT49]

Cat. No. GTX01958

Host	Mouse
Clonality	Monoclonal
Isotype	IgG1
Applications	IHC-P
Reactivity	Human

References (1)

Package

500 µl

Applications

Application Note

*Optimal dilutions/concentrations should be determined by the researcher.

Suggested dilution	Recommended dilution
IHC-P	1:100

Note : The recommended fixative is 10% neutral-buffered formalin for paraffin-embedded tissue sections. Heat Induced Epitope Retrieval (HIER) was performed in Epitope Retrieval Solution pH 9.

Not tested in other applications.

Properties

Form	Liquid
Buffer	Tissue culture supernatant
Preservative	0.09% Sodium azide
Storage	Store as concentrated solution. Centrifuge briefly prior to opening vial. Store at 4°C. DO NOT FREEZE.
Immunogen	A prokaryotic recombinant protein containing 1–181 amino acids of the N-terminal of the Wilms' Tumor protein.
Purification	Unpurified
Conjugation	Unconjugated

Note

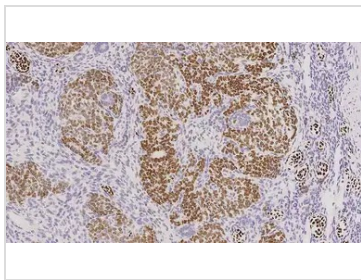
For laboratory research use only. Not for any clinical, therapeutic, or diagnostic use in humans or animals. Not for animal or human consumption.

Purchasers shall not, and agree not to enable third parties to, analyze, copy, reverse engineer or otherwise attempt to determine the structure or sequence of the product.



For full product information, images and publications, please visit our [website](#).

DATA IMAGES



GTx01958 IHC-P Image

IHC-P analysis of human kidney tissue using GTx01958 Wilms Tumor 1 antibody [WT49]. Note the nuclear staining of invasive tumor cells.



For full product information, images and publications, please visit our [website](#).