

## Nucleophosmin antibody [5A4]

Cat. No. GTX01967

Host	Mouse
Clonality	Monoclonal
Isotype	IgG1
Applications	IHC-P
Reactivity	Human

Package  
500 µl

## Applications

## Application Note

\*Optimal dilutions/concentrations should be determined by the researcher.

Suggested dilution	Recommended dilution
IHC-P	1:200

**Note : Heat Induced Epitope Retrieval (HIER) was performed in Epitope Retrieval Solution pH6.**

Not tested in other applications.

## Properties

Form	Liquid
Buffer	Tissue culture supernatant
Preservative	0.09% Sodium azide
Storage	Store as concentrated solution. Centrifuge briefly prior to opening vial. Store at 4°C. DO NOT FREEZE.
Immunogen	Prokaryotic recombinant protein corresponding to a region which spans the tyrosine kinase catalytic domain and part of the C-terminus of the NPM-ALK transcript (419-520 amino acids).
Purification	Unpurified
Conjugation	Unconjugated

## Note

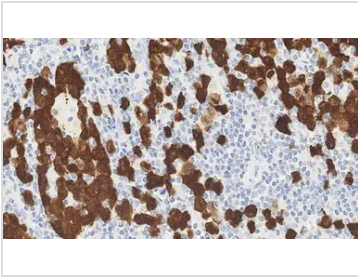
For laboratory research use only. Not for any clinical, therapeutic, or diagnostic use in humans or animals. Not for animal or human consumption.

Purchasers shall not, and agree not to enable third parties to, analyze, copy, reverse engineer or otherwise attempt to determine the structure or sequence of the product.



For full product information, images and publications, please visit our [website](#).

## DATA IMAGES

**GTX01967 IHC-P Image**

IHC-P analysis of anaplastic large cell lymphoma using GTX01967 Nucleophosmin antibody [5A4]. Note the strong nuclear and cytoplasmic staining in the neoplastic cells.



For full product information, images and publications, please visit our [website](#).