

## Fascin 1 antibody [IM20]

Cat. No. GTX01968

Host	Mouse
Clonality	Monoclonal
Isotype	IgG1
Applications	WB, IHC-P
Reactivity	Human

Package  
500 µl

## Applications

## Application Note

\*Optimal dilutions/concentrations should be determined by the researcher.

Suggested dilution	Recommended dilution
WB	1:100–1:200
IHC-P	1:200–1:400

**Note : High temperature antigen unmasking technique. Standard ABC technique.**

Not tested in other applications.

Calculated MW 55 kDa. ( [Note](#) )

## Properties

Form	Liquid
Buffer	Tissue culture supernatant
Preservative	0.09% Sodium azide
Storage	Store as concentrated solution. Centrifuge briefly prior to opening vial. Store at 4°C.
Immunogen	Prokaryotic recombinant protein corresponding to the C-terminal region of the fascin molecule.
Purification	Unpurified
Conjugation	Unconjugated

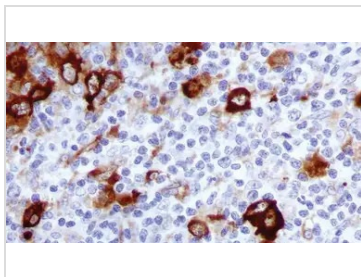
## Note

For laboratory research use only. Not for any clinical, therapeutic, or diagnostic use in humans or animals. Not for animal or human consumption.

Purchasers shall not, and agree not to enable third parties to, analyze, copy, reverse engineer or otherwise attempt to determine the structure or sequence of the product.



For full product information, images and publications, please visit our [website](#).

**DATA IMAGES**

**GTX01968 IHC-P Image**

IHC-P analysis of hodgkin's lymphoma tissue using GTX01968 Fascin 1 antibody [IM20].



For full product information, images and publications, please visit our [website](#).